

Datasheet for ABIN531807
anti-CARD17 antibody (AA 1-110)[Go to Product page](#)

1 Image

Overview

Quantity:	50 µg
Target:	CARD17
Binding Specificity:	AA 1-110
Reactivity:	Human
Host:	Mouse
Clonality:	Polyclonal
Conjugate:	This CARD17 antibody is un-conjugated
Application:	Western Blotting (WB)

Product Details

Purpose:	Mouse polyclonal antibody raised against a full-length human INCA protein.
Immunogen:	INCA (NP_001007233.1, 1 a.a. ~ 110 a.a) full-length human protein.
Sequence:	MADKVLKEKR KQFIRSVGEG TINGLLGELL ETRVLSQEEI EIVKCENATV MDKARALLDS VIRKGAPACQ ICITYICEED SHLAGTLGLS AGPTSGNHLT TQDSQIVLPS
Cross-Reactivity:	Human
Characteristics:	Antibody reactive against mammalian transfected lysate.

Target Details

Target:	CARD17
Alternative Name:	CARD17 (CARD17 Products)

Target Details

Background:	Full Gene Name: caspase recruitment domain family, member 17 Synonyms: INCA
Gene ID:	440068
NCBI Accession:	NM_001007232

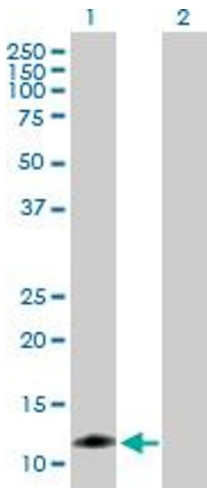
Application Details

Application Notes:	Optimal working dilution should be determined by the investigator.
Restrictions:	For Research Use only

Handling

Buffer:	In 1x PBS, pH 7.4
Handling Advice:	Aliquot to avoid repeated freezing and thawing.
Storage:	-20 °C
Storage Comment:	Store at -20°C or lower. Aliquot to avoid repeated freezing and thawing.

Images



Western Blotting

Image 1. Western Blot analysis of CARD17 expression in transfected 293T cell line by CARD17 MaxPab polyclonal antibody.

Lane 1: INCA transfected lysate(12.1 kDa).

Lane 2: Non-transfected lysate.