



[Go to Product page](#)

Datasheet for ABIN531809

anti-**PLEKHM1P** antibody (AA 1-237)

1 Image

Overview

Quantity:	50 µg
Target:	PLEKHM1P
Binding Specificity:	AA 1-237
Reactivity:	Human
Host:	Mouse
Clonality:	Polyclonal
Conjugate:	This PLEKHM1P antibody is un-conjugated
Application:	Western Blotting (WB)

Product Details

Purpose:	Mouse polyclonal antibody raised against a full-length human LOC440456 protein.
Immunogen:	LOC440456 (ENSP00000313104, 1 a.a. ~ 237 a.a) full-length human protein.
Sequence:	MTSPRTGTPA LDNQPQTGIP RAAGGRDAGT PGQQIPGGEG KEGEGTGEAH PPWAPLATSQ RPFRRSLPGS GPRLSAPVLV PMPPKVPSRG IQVPPRPAQT QLLWVWVTAL LSVAVPIRCR CQLRFRETSP APPRKPRPGR WSGPNLPAPP TRPLGSLRPA QQTRGTLDKV AKEPYGSPGL DPAPSVPQPR QAAVSWPLAW VTLGGRRRCG QCGSLEGPCT SGEDHRLMAL VEGRRQI
Cross-Reactivity:	Human
Characteristics:	Antibody reactive against mammalian transfected lysate.

Target Details

Target:	PLEKHM1P
---------	----------

Target Details

Alternative Name:	PLEKHM1P (PLEKHM1P Products)
Background:	Full Gene Name: pleckstrin homology domain containing, family M (with RUN domain) member 1 pseudogene Synonyms:
Gene ID:	440456
NCBI Accession:	XM_942463

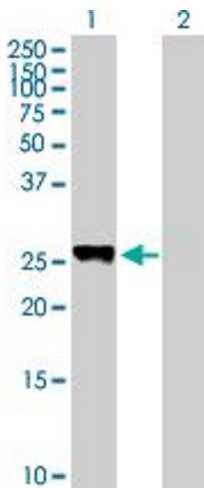
Application Details

Application Notes:	Optimal working dilution should be determined by the investigator.
Restrictions:	For Research Use only

Handling

Buffer:	In 1x PBS, pH 7.4
Handling Advice:	Aliquot to avoid repeated freezing and thawing.
Storage:	-20 °C
Storage Comment:	Store at -20°C or lower. Aliquot to avoid repeated freezing and thawing.

Images



Western Blotting

Image 1. Western Blot analysis of PLEKHM1P expression in transfected 293T cell line by PLEKHM1P MaxPab polyclonal antibody.

Lane 1: LOC440456 transfected lysate(26.07 KDa).

Lane 2: Non-transfected lysate.