



[Go to Product page](#)

Datasheet for ABIN531812

anti-CT45A3 antibody (AA 1-189)

1 Image

Overview

Quantity:	50 µL
Target:	CT45A3
Binding Specificity:	AA 1-189
Reactivity:	Human
Host:	Mouse
Clonality:	Polyclonal
Conjugate:	This CT45A3 antibody is un-conjugated
Application:	Western Blotting (WB)

Product Details

Purpose:	Mouse polyclonal antibody raised against a full-length human CT45A3 protein.
Immunogen:	CT45A3 (NP_001017435, 1 a.a. ~ 189 a.a) full-length human protein.
Sequence:	MTDKTEKVAV DPETVFKRPR ECDSPSYQKR QRMALLARKQ GAGDSLIIAGS AMSKEKKLMT GHAIPPSQLD SQIDDFTGFS KDRMMQKPGS NAPVGGNVTS SFGDDELECR ETASSPKSQR EINADIKRKL VKELRCVGQK YEKIFEMLEG VQGPTAVRKR FFESIIEAA RCMRRDFVKH LKKKLRMI
Cross-Reactivity:	Human
Characteristics:	Antibody reactive against mammalian transfected lysate.

Target Details

Target:	CT45A3
---------	--------

Target Details

Alternative Name:	CT45A3 (CT45A3 Products)
Background:	Full Gene Name: cancer/testis antigen family 45, member A3 Synonyms: CT45-3,CT45.3
Gene ID:	441519
NCBI Accession:	NM_001017435

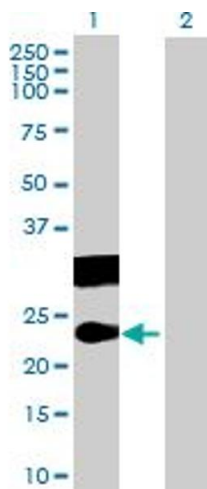
Application Details

Application Notes:	Optimal working dilution should be determined by the investigator.
Restrictions:	For Research Use only

Handling

Format:	Liquid
Buffer:	No additive
Preservative:	Without preservative
Handling Advice:	Aliquot to avoid repeated freezing and thawing.
Storage:	-20 °C
Storage Comment:	Store at -20°C or lower. Aliquot to avoid repeated freezing and thawing.

Images



Western Blotting

Image 1. Western Blot analysis of CT45A3 expression in transfected 293T cell line by CT45A3 MaxPab polyclonal antibody.

Lane 1: CT45A3 transfected lysate(20.79 KDa).

Lane 2: Non-transfected lysate.