



[Go to Product page](#)

Datasheet for ABIN531829  
**anti-SCART1 antibody (AA 1-232)**

1 Image

Overview

Quantity:	50 µL
Target:	SCART1
Binding Specificity:	AA 1-232
Reactivity:	Human
Host:	Mouse
Clonality:	Polyclonal
Conjugate:	This SCART1 antibody is un-conjugated
Application:	Western Blotting (WB)

Product Details

Purpose:	Mouse polyclonal antibody raised against a full-length human SCART1 protein.
Immunogen:	SCART1 (AAH38300.1, 1 a.a. ~ 232 a.a) full-length human protein.
Sequence:	MRAALWTLGL GPLLLNLWAV PIGGPGALRL AYRHSTCDGV VLVRHHGAWG YVCNQEWTLA EASVVCRLG CGPAVGAPKY VPLPGEMAKP WLHNVSCRGN ESSLWECSLG SWCQSPCPHA WVVVALCSNG TFRELGLVKG RSPCAGLPEI RNVNGVDRLC VLHVEEAMVF CRELGCGPVL QAPRRDVGVV RKYLACRGTE PTIRSCRLDN NFRSGCDLRL DAEVCSGEA AT
Cross-Reactivity:	Human
Characteristics:	Antibody reactive against mammalian transfected lysate.

Target Details

Target:	SCART1
---------	--------

## Target Details

Alternative Name:	LOC619207 ( <a href="#">SCART1 Products</a> )
Background:	Full Gene Name: scavenger receptor protein family member Synonyms:
Gene ID:	619207

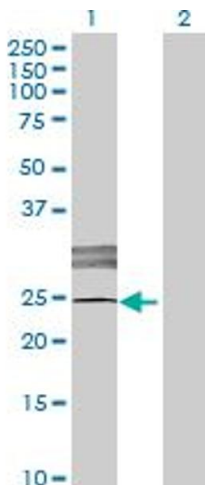
## Application Details

Application Notes:	Optimal working dilution should be determined by the investigator.
Restrictions:	For Research Use only

## Handling

Format:	Liquid
Buffer:	No additive
Preservative:	Without preservative
Handling Advice:	Aliquot to avoid repeated freezing and thawing.
Storage:	-20 °C
Storage Comment:	Store at -20°C or lower. Aliquot to avoid repeated freezing and thawing.

## Images



### Western Blotting

**Image 1.** Western Blot analysis of LOC619207 expression in transfected 293T cell line by LOC619207 MaxPab polyclonal antibody.

Lane 1: LOC619207 transfected lysate(25.52 KDa).

Lane 2: Non-transfected lysate.