



[Go to Product page](#)

Datasheet for ABIN531830  
**anti-ZBTB8A antibody (AA 1-441)**

2 Images

Overview

Quantity:	50 µg
Target:	ZBTB8A
Binding Specificity:	AA 1-441
Reactivity:	Human
Host:	Mouse
Clonality:	Polyclonal
Conjugate:	This ZBTB8A antibody is un-conjugated
Application:	Western Blotting (WB), Immunofluorescence (IF)

Product Details

Purpose:	Mouse polyclonal antibody raised against a full-length human ZBTB8 protein.
Immunogen:	ZBTB8 (XP_001124597.1, 1 a.a. ~ 441 a.a) full-length human protein.
Sequence:	MEISSHQSHL LQQLNEQRRQ DVFCDCSILV EGKVFKAHRN VLFASSGYFK MLLSQNSKET SQPTTATFQA FSPDTFTVIL DFVYSGKLSL TGQNVIEVMS AASFLQMTDV ISVCKTFIKS SLDISEKEKD RYFSLSDKDA NSNGVERSSF YSGGWQEGSS SPRSHLSPEQ GTGIISGKSW NKYNYHPASQ KNTQQPLAKH EPRKESIKKT KHLRLSQPSE VTHYKSSKRE VRTSDSSSHV SQSEEAQID AEMDSTPVGY QYGQGS DVTS KSPDDLPRM RFKCPYCTHV VKRKADLKRH LRCHTGERPY PCQACGKRFS RLDHLSSHFR TIHQACKLIC RKCKRHVTDL TGQVWQEGTR RYRLCNECLA EFGIDSLPID LEAEQHLMSP SDGDKDSRWH LSEDENRSYV EIVEDGSADL VIQQVDDSEE EEEKEIKPNI R
Cross-Reactivity:	Human

## Product Details

Characteristics: Antibody reactive against mammalian transfected lysate.

## Target Details

Target: ZBTB8A

Alternative Name: ZBTB8 ([ZBTB8A Products](#))

Background: Full Gene Name: zinc finger and BTB domain containing 8  
Synonyms: BOZF1,FLJ90065,MGC17919

Gene ID: 653121

NCBI Accession: [XM\\_001124597](#)

## Application Details

Application Notes: Optimal working dilution should be determined by the investigator.

Restrictions: For Research Use only

## Handling

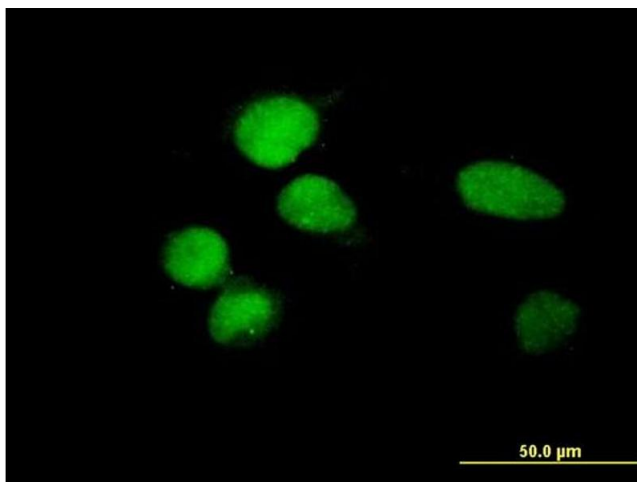
Buffer: In 1x PBS, pH 7.4

Handling Advice: Aliquot to avoid repeated freezing and thawing.

Storage: -20 °C

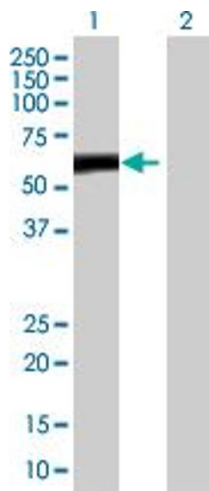
Storage Comment: Store at -20°C or lower. Aliquot to avoid repeated freezing and thawing.

## Images



### Immunofluorescence

**Image 1.** Immunofluorescence of purified MaxPab antibody to ZBTB8 on HeLa cell. [antibody concentration 10 ug/ml]



### Western Blotting

**Image 2.** Western Blot analysis of ZBTB8 expression in transfected 293T cell line by ZBTB8 MaxPab polyclonal antibody.

Lane 1: ZBTB8 transfected lysate(50.20 KDa).

Lane 2: Non-transfected lysate.