

Datasheet for ABIN531851
anti-CPI-17 antibody (pThr38)[Go to Product page](#)

2 Images

Overview

Quantity:	100 µg
Target:	CPI-17 (PPP1R14A)
Binding Specificity:	pThr38
Reactivity:	Human, Mouse, Rat
Host:	Mouse
Clonality:	Monoclonal
Conjugate:	This CPI-17 antibody is un-conjugated
Application:	Western Blotting (WB), ELISA

Product Details

Purpose:	Mouse monoclonal antibody raised against synthetic phosphopeptide of PPP1R14A.
Immunogen:	Synthetic phosphopeptide (conjugated with KLH) corresponding to residues surrounding T38 of human PPP1R14A.
Clone:	AK-1F11
Isotype:	IgG1
Cross-Reactivity:	Human, Mouse, Rat
Characteristics:	Phospho-CPI-17 Thr38 Antibody detects phosphorylated recombinant CPI-17 when phosphorylated at threonine38 in vitro by means of western blotting and ELISA.

Target Details

Target:	CPI-17 (PPP1R14A)
Alternative Name:	PPP1R14A (PPP1R14A Products)
Gene ID:	94274
NCBI Accession:	NM_033256

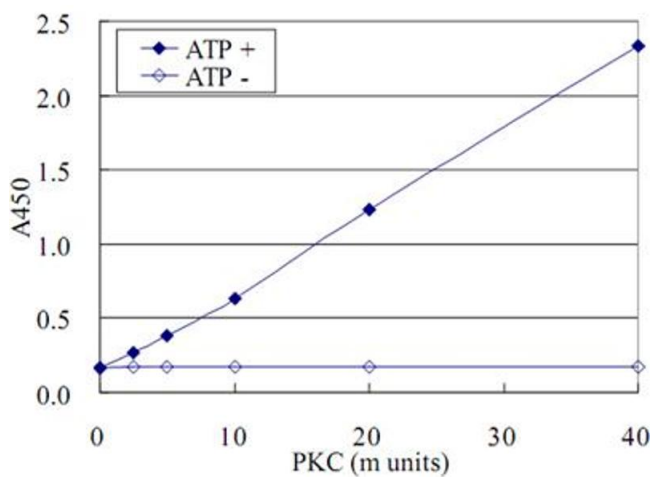
Application Details

Application Notes:	Western Blot (1-2 µg/mL) ELISA (1 µg/mL) The optimal working dilution should be determined by the end user.
Restrictions:	For Research Use only

Handling

Format:	Liquid
Buffer:	In 10 mM HEPES/KOH, 150 mM NaCl, pH 7.5 (50 % glycerol)
Storage:	-20 °C
Storage Comment:	Store at -20°C. Aliquot to avoid repeated freezing and thawing.

Images



ELISA

Image 1. ELISA for measurement of recombinant PKC activity using CPI-17 (phospho T38) monoclonal antibody, clone AK-1F11 .

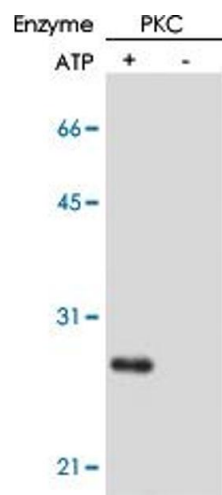


Image 2. In vitro kinase reaction and detection of phosphorylation of CPI-17 at Thr38 residue by using CPI-17 (phospho T38) monoclonal antibody, clone AK-1F11 . GST-CPI-17 was phosphorylated by protein kinase C derived from rat brain in vitro and proved by CPI-17 (phospho T38) monoclonal antibody, clone AK-1F11 after SDS-PAGE and transfer to PVDF membrane.