

Datasheet for ABIN531987

anti-TLR6 antibody (AA 408-424)**2** Images**1** Publication[Go to Product page](#)

Overview

Quantity:	100 µg
Target:	TLR6
Binding Specificity:	AA 408-424
Reactivity:	Human
Host:	Mouse
Clonality:	Monoclonal
Conjugate:	This TLR6 antibody is un-conjugated
Application:	Flow Cytometry (FACS), Immunohistochemistry (Paraffin-embedded Sections) (IHC (p))

Product Details

Purpose:	Mouse monoclonal antibody raised against synthetic peptide of TLR6.
Immunogen:	A synthetic peptide corresponding to amino acids 408-424 of human TLR6.
Clone:	86B1153-2
Isotype:	IgG1
Cross-Reactivity:	Human

Target Details

Target:	TLR6
Alternative Name:	CD286 / TLR6 (TLR6 Products)
Gene ID:	10333

Target Details

Pathways: [TLR Signaling](#), [Activation of Innate immune Response](#), [Cellular Response to Molecule of Bacterial Origin](#), [Toll-Like Receptors Cascades](#)

Application Details

Application Notes: The optimal working dilution should be determined by the end user.

Restrictions: For Research Use only

Handling

Format: Liquid

Buffer: In PBS (0.05 % BSA, 0.05 % sodium azide)

Preservative: Sodium azide

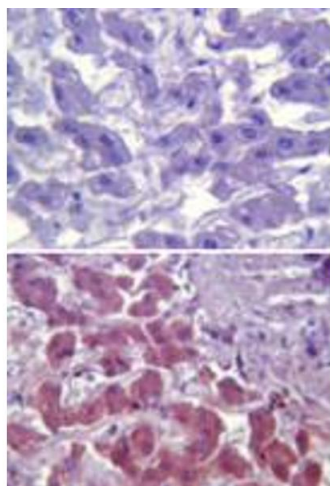
Precaution of Use: This product contains Sodium azide: a POISONOUS AND HAZARDOUS SUBSTANCE which should be handled by trained staff only.

Storage: 4 °C, -20 °C

Storage Comment: Store at 4°C. For long term storage store at -20°C.
Aliquot to avoid repeated freezing and thawing.

Publications

Product cited in: Balmer, Arredondo, Samaco, LaSalle: "MECP2 mutations in Rett syndrome adversely affect lymphocyte growth, but do not affect imprinted gene expression in blood or brain." in: **Human genetics**, Vol. 110, Issue 6, pp. 545-52, (2002) ([PubMed](#)).



Immunohistochemistry

Image 1. Immunohistochemical analysis of TLR6 in paraffin-embedded formalin-fixed human liver tissue using an isotype control (top) and TLR6 monoclonal antibody, clone 86B1153.2 (bottom) at 5 ug/mL .

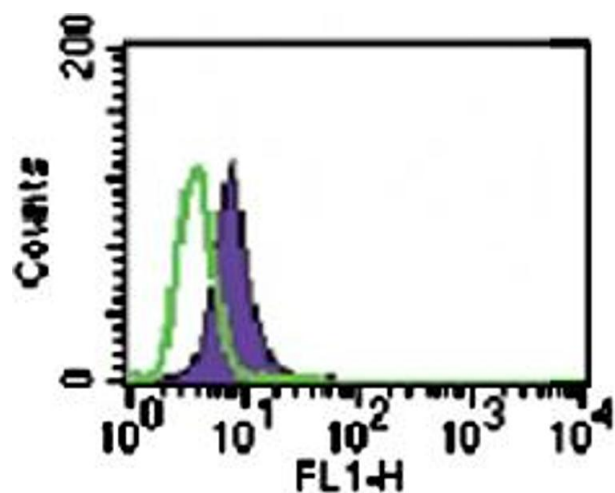


Image 2. Intracellular FACS analysis of TLR6 (shaded peak) and mouse IgG1 isotype control (open peak) in 10⁶ Ramos cells using 3 ugs of TLR6 monoclonal antibody, clone 86B1153.2 .