

Datasheet for ABIN532237

anti-Creatine Kinase MB antibody[Go to Product page](#)**1** Image

Overview

Quantity:	100 µg
Target:	Creatine Kinase MB (CKM)
Reactivity:	Human
Host:	Mouse
Clonality:	Monoclonal
Conjugate:	This Creatine Kinase MB antibody is un-conjugated
Application:	ELISA, Western Blotting (WB)

Product Details

Purpose:	Mouse monoclonal antibody raised against a full length native Creatine Kinase MB.
Immunogen:	Native purified human Creatine Kinase MB.
Clone:	4H3
Isotype:	IgG2a
Cross-Reactivity:	Human
Characteristics:	Antibody Reactive Against Native Protein

Target Details

Target:	Creatine Kinase MB (CKM)
Alternative Name:	Creatine Kinase MB (CKM Products)
Background:	Full Gene Name:

Target Details

Synonyms:

Application Details

Application Notes:	The optimal working dilution should be determined by the end user.
Restrictions:	For Research Use only

Handling

Format:	Liquid
Buffer:	In PBS, pH 7.4
Handling Advice:	Aliquot to avoid repeated freezing and thawing.
Storage:	-20 °C
Storage Comment:	Store at -20°C or lower. Aliquot to avoid repeated freezing and thawing.

Images

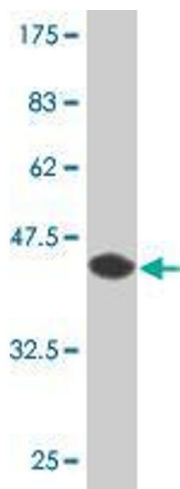


Image 1.