

Datasheet for ABIN5326748
anti-IL-1 beta antibody (N-Term)



[Go to Product page](#)

3 Images

2 Publications

Overview

Quantity:	100 µL
Target:	IL-1 beta (IL1B)
Binding Specificity:	N-Term
Reactivity:	Human, Mouse, Rabbit, Dog, Horse
Host:	Rabbit
Clonality:	Polyclonal
Conjugate:	This IL-1 beta antibody is un-conjugated
Application:	Western Blotting (WB), Immunohistochemistry (IHC)

Product Details

Immunogen:	The immunogen is a synthetic peptide directed towards the N terminal region of human IL1B
Sequence:	MAEVP ELASE MMAYYS GNED DLFFEADGPK QMKCSFQDL D LCPLDGGIQL
Predicted Reactivity:	Dog: 92%, Horse: 86%, Human: 100%, Mouse: 75%, Rabbit: 92%
Characteristics:	This is a rabbit polyclonal antibody against IL1B. It was validated on Western Blot using a cell lysate as a positive control.
Purification:	Affinity Purified

Target Details

Target:	IL-1 beta (IL1B)
Alternative Name:	IL1B (IL1B Products)

Target Details

Background: IL1B is a member of the interleukin 1 cytokine family. This cytokine is produced by activated macrophages as a proprotein, which is proteolytically processed to its active form by caspase 1 (CASP1/ICE). This cytokine is an important mediator of the inflammatory response, and is involved in a variety of cellular activities, including cell proliferation, differentiation, and apoptosis. The induction of cyclooxygenase-2 (PTGS2/COX2) by this cytokine in the central nervous system (CNS) is found to contribute to inflammatory pain hypersensitivity. The gene encoding IL1B and eight other interleukin 1 family genes form a cytokine gene cluster on chromosome 2.

Alias Symbols: IL-1, IL1-BETA, IL1F2

Protein Interaction Partner: PTPN1, LYN, FYN, CMA1, CASP1, APP, SP1, EGR1, ELAVL1, CASP4, IL1RAP, PRTN3, IL1R2, IL1R1, IL1B, MMP2, ADRB2, A2M, UBE2N, ZNF675, MAPK8IP2,

Protein Size: 269

Molecular Weight: 17 kDa

Gene ID: 3553

NCBI Accession: [NM_000576](#), [NP_000567](#)

UniProt: [P01584](#)

Pathways: [NF-kappaB Signaling](#), [Interferon-gamma Pathway](#), [TLR Signaling](#), [Negative Regulation of Hormone Secretion](#), [Cellular Response to Molecule of Bacterial Origin](#), [Carbohydrate Homeostasis](#), [Glycosaminoglycan Metabolic Process](#), [Myometrial Relaxation and Contraction](#), [Regulation of Leukocyte Mediated Immunity](#), [Positive Regulation of Immune Effector Process](#), [Autophagy](#), [Cancer Immune Checkpoints](#), [Inflammasome](#)

Application Details

Application Notes: Optimal working dilutions should be determined experimentally by the investigator.

Comment: Antigen size: 269 AA

Restrictions: For Research Use only

Handling

Format: Liquid

Concentration: Lot specific

Buffer: Liquid. Purified antibody supplied in 1x PBS buffer with 0.09 % (w/v) sodium azide and 2 % sucrose.

Handling

Preservative:	Sodium azide
Precaution of Use:	This product contains Sodium azide: a POISONOUS AND HAZARDOUS SUBSTANCE which should be handled by trained staff only.
Handling Advice:	Avoid repeated freeze-thaw cycles.
Storage:	-20 °C
Storage Comment:	For short term use, store at 2-8°C up to 1 week. For long term storage, store at -20°C in small aliquots to prevent freeze-thaw cycles.

Publications

Product cited in:	Lee, Lu, Chai, Sheu, Chen, Huang, Kao, Chen, Chung, Sung, Chang, Lee, Yip: "Circulating microparticles enhanced rat vascular wall remodeling following endothelial denudation." in: American journal of translational research , Vol. 8, Issue 11, pp. 4511-4522, (2016) (PubMed).
	Wang, Jiang, Li, He, Zhao, Yang, Zhu, Yin, Li, Wang, Liu, Shang, Yang, Wang, Zhen, Zhang, Yu, Zhong, Ye, Huang, Yuan: "Shigella flexneri T3SS effector IpaH4.5 modulates the host inflammatory response via interaction with NF- κ B p65 protein." in: Cellular microbiology , Vol. 15, Issue 3, pp. 474-85, (2013) (PubMed).

Images



Western Blotting

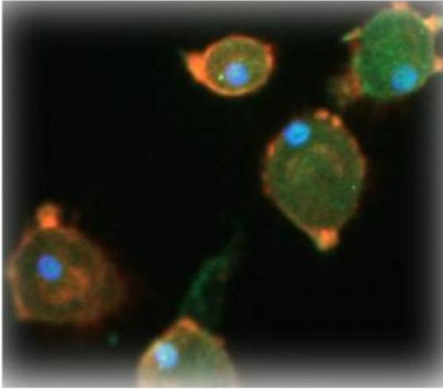
Image 1. WB Suggested Anti-IL1B Antibody Titration: 0.2-

1 ug/ml

ELISA Titer: 1:12500

Positive Control: Hela cell lysate

IL1B



See Immunohistochemistry Data for more information.

Immunohistochemistry

Image 2. Sample Type: Human Macrophange Cells

Green: primary

Red: phalloidin

Blue: DAPI

Yellow: green/red

Primary Dilution: 1:200

Secondary Antibody: anti-Rabbit IgG-FITC

Secondary Dilution: 1:1000

Image Submitted By: Milan Fiala

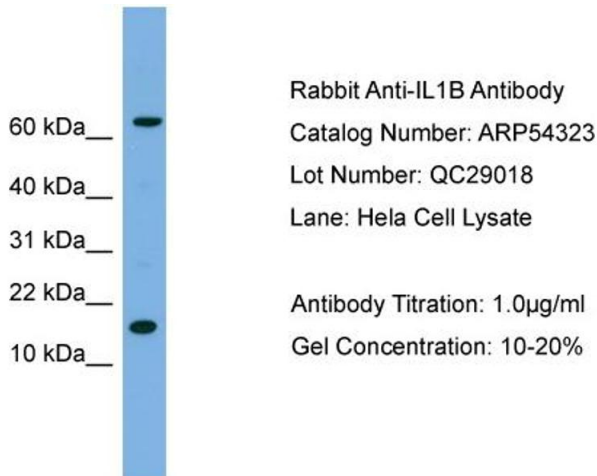
University of California, Los Angeles

Western Blotting

Image 3. WB Suggested Anti-IL1B

Antibody Titration: 0.2-1 µg/mL ELISA Titer: 1:12500

Positive Control: Hela cell lysate



Rabbit Anti-IL1B Antibody
Catalog Number: ARP54323
Lot Number: QC29018
Lane: Hela Cell Lysate

Antibody Titration: 1.0µg/ml
Gel Concentration: 10-20%