

Datasheet for ABIN532826
anti-SYK antibody (AA 5-360)

3 Images

[Go to Product page](#)

Overview

Quantity:	100 µg
Target:	SYK
Binding Specificity:	AA 5-360
Reactivity:	Human
Host:	Mouse
Clonality:	Monoclonal
Conjugate:	This SYK antibody is un-conjugated
Application:	Western Blotting (WB), Immunofluorescence (IF), Immunoprecipitation (IP), Immunocytochemistry (ICC)

Product Details

Purpose:	Mouse monoclonal antibody raised against partial recombinant SYK.
Immunogen:	Recombinant protein corresponding to amino acids 5-360 of human SYK.
Clone:	SYK-01
Isotype:	IgG1
Specificity:	This antibody reacts with protein tyrosine kinase p72Syk (Syk, Syk family tyrosine-specific phospho-transferase), which is required for the transduction of signals through the B cell antigen receptor (BCR) and the high affinity IgE receptor (Fc epsilon RI).
Cross-Reactivity:	Human, Mouse, Rat

Target Details

Target:	SYK
Alternative Name:	SYK (SYK Products)
Gene ID:	6850
Pathways:	Fc-epsilon Receptor Signaling Pathway , Regulation of Leukocyte Mediated Immunity , Positive Regulation of Immune Effector Process , Thromboxane A2 Receptor Signaling , BCR Signaling

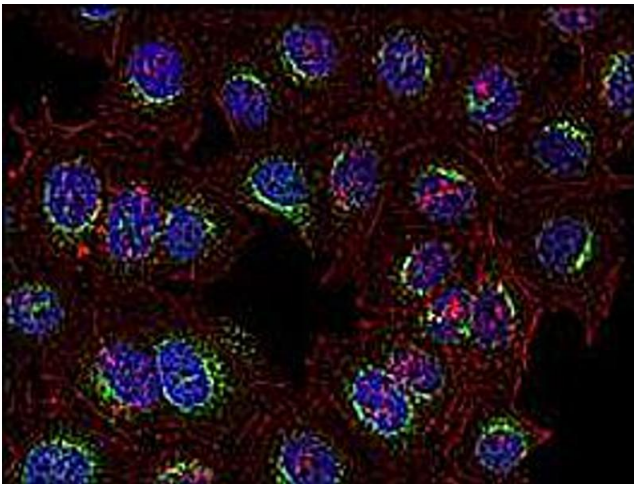
Application Details

Application Notes:	The optimal working dilution should be determined by the end user.
Restrictions:	For Research Use only

Handling

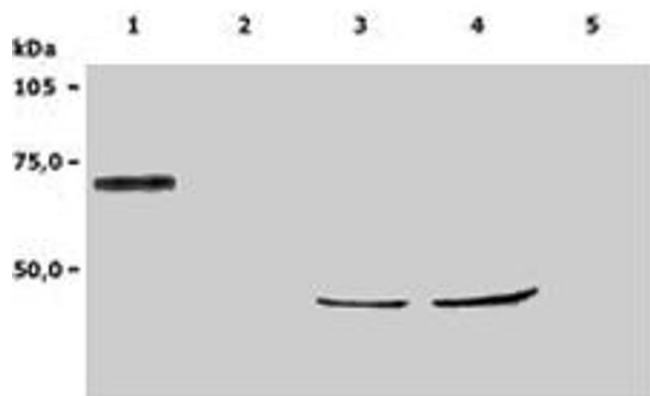
Format:	Liquid
Concentration:	1 mg/mL
Buffer:	In PBS, pH 7.4 (0.09 % sodium azide)
Preservative:	Sodium azide
Precaution of Use:	This product contains Sodium azide: a POISONOUS AND HAZARDOUS SUBSTANCE which should be handled by trained staff only.
Storage:	4 °C
Storage Comment:	Store at 4°C. Do not freeze.

Images



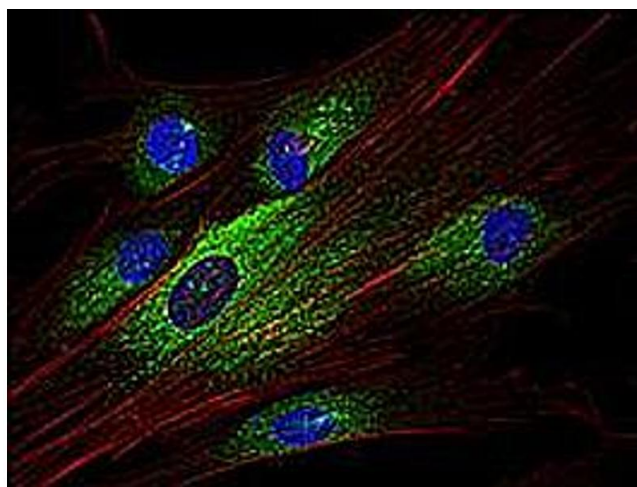
Immunofluorescence

Image 1. Immunofluorescence staining of SYK in human HeLa cell line using SYK monoclonal antibody, clone SYK-01 (Cat # MAB0948 1; green). Actin cytoskeleton was decorated by phalloidin (red) and cell nuclei stained with DAPI (blue) .



Western Blotting

Image 2. Western Blotting analysis (non-reducing conditions) of whole cell lysate of RAMOS human Burkitt lymphoma cell line (1), RBL rat basophilic leukemia cell line (2) and HeLa human cervix carcinoma cell line (3, 4). Lane 1, 2: Immunostaining with SYK monoclonal antibody, clone SYK-01. Lane 3, 4: Immunostaining with anti-human Cytokeratin 18 (DC-10). Lane 5: Negative control.



Immunofluorescence

Image 3. Immunofluorescence staining of SYK in human primary fibroblasts using SYK monoclonal antibody, clone SYK-01 (Cat # MAB0948; green). Actin cytoskeleton was decorated by phalloidin (red) and cell nuclei stained with DAPI (blue).