



Datasheet for ABIN532911
anti-TPD52L1 antibody (AA 1-131)



[Go to Product page](#)

2 Images

Overview

Quantity:	100 µL
Target:	TPD52L1
Binding Specificity:	AA 1-131
Reactivity:	Human
Host:	Mouse
Clonality:	Monoclonal
Conjugate:	This TPD52L1 antibody is un-conjugated
Application:	ELISA, Immunohistochemistry (IHC), Flow Cytometry (FACS)

Product Details

Purpose:	Mouse monoclonal antibody raised against partial recombinant TPD52L1.
Immunogen:	Recombinant protein corresponding to amino acids 1-131 of human TPD52L1.
Clone:	D1D5
Isotype:	IgG2b
Cross-Reactivity:	Human

Target Details

Target:	TPD52L1
Alternative Name:	Tumor protein D53 (TPD52L1) (TPD52L1 Products)
Gene ID:	7164

Target Details

NCBI Accession: [NM_001003397](#)

Pathways: [Positive Regulation of Endopeptidase Activity](#)

Application Details

Application Notes: ELISA
Flow Cytometry
Immunohistochemistry
Western Blot
The optimal working dilution should be determined by the end user.

Restrictions: For Research Use only

Handling

Format: Liquid

Buffer: In PBS, pH 7.4 (10 % glycerol, 0.02 % sodium azide).

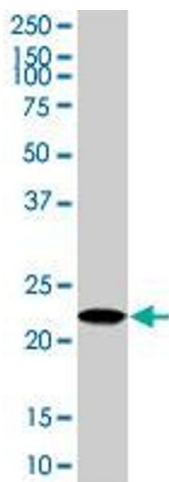
Preservative: Sodium azide

Precaution of Use: This product contains Sodium azide: a POISONOUS AND HAZARDOUS SUBSTANCE which should be handled by trained staff only.

Storage: -20 °C,-80 °C

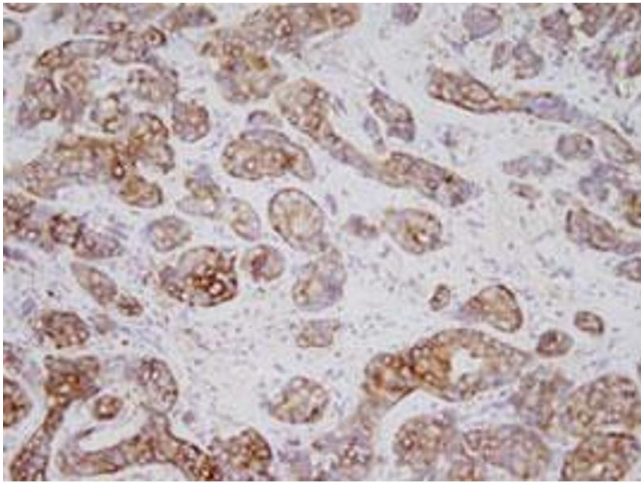
Storage Comment: Store at 2°C to 8°C for 1 week. For long term storage, aliquot and store at -20°C to -80°C. Aliquot to avoid repeated freezing and thawing.

Images



Western Blotting

Image 1. TPD52L1 monoclonal antibody, clone d1C5.
Western blot analysis of TPD52L1 expression in MCF-7.



Immunohistochemistry

Image 2. Immunohistochemistry of human breast carcinoma tissues were incubated with TPD52L1 monoclonal antibody , clone d1C5 (1 : 200) at room temperature. Slides were then washed in PBS , and were incubated in avidin biosystem anti - rabbit labeled polymer for 30 min at RT.