



[Go to Product page](#)

Datasheet for ABIN532957

anti-VAMP2 antibody (AA 1-89)

1 Image

2 Publications

Overview

Quantity:	100 µL
Target:	VAMP2
Binding Specificity:	AA 1-89
Reactivity:	Human
Host:	Mouse
Clonality:	Monoclonal
Conjugate:	This VAMP2 antibody is un-conjugated
Application:	Western Blotting (WB), ELISA, Immunocytochemistry (ICC), Immunofluorescence (IF)

Product Details

Purpose:	Mouse monoclonal antibody raised against partial recombinant VAMP2.
Immunogen:	Recombinant protein corresponding to amino acids 1-89 of human VAMP2.
Clone:	3E5
Isotype:	IgG1
Cross-Reactivity:	Human, Rat

Target Details

Target:	VAMP2
Alternative Name:	VAMP-2 / Synaptobrevin-2 (VAMP2 Products)
Gene ID:	6844

Target Details

NCBI Accession: [NM_014232](#)

Pathways: [Peptide Hormone Metabolism](#), [Synaptic Vesicle Exocytosis](#), [Dicarboxylic Acid Transport](#)

Application Details

Application Notes: Western Blot (1:2000-1:3000)
The optimal working dilution should be determined by the end user.

Restrictions: For Research Use only

Handling

Format: Liquid

Buffer: In PBS, pH 7.4 (10 % glycerol, 0.02 % sodium azide).

Preservative: Sodium azide

Precaution of Use: This product contains Sodium azide: a POISONOUS AND HAZARDOUS SUBSTANCE which should be handled by trained staff only.

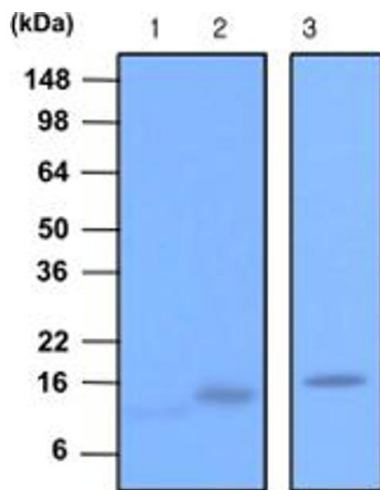
Storage: -20 °C,-80 °C

Storage Comment: Store at 2°C to 8°C for 1 week. For long term storage, aliquot and store at -20°C to -80°C. Aliquot to avoid repeated freezing and thawing.

Publications

Product cited in: Pennuto, Bonanomi, Benfenati, Valtorta: "Synaptophysin I controls the targeting of VAMP2/synaptobrevin II to synaptic vesicles." in: **Molecular biology of the cell**, Vol. 14, Issue 12, pp. 4909-19, (2003) ([PubMed](#)).

Scales, Hesser, Masuda, Scheller: "Amisyn, a novel syntaxin-binding protein that may regulate SNARE complex assembly." in: **The Journal of biological chemistry**, Vol. 277, Issue 31, pp. 28271-9, (2002) ([PubMed](#)).



Western Blotting

Image 1. Western blot analysis of recombinant Synaptobrevin 1, 2 (each 20 ng) and rat brain extracts (20 ug). Lane 1 : Synaptobrevin 1. Lane 2 : Synaptobrevin 2. Lane 3 : Rat brain. To probed with VAMP2 monoclonal antibody , clone 3E5 (1 : 2000) . Proteins were visualized using a goat anti - mouse secondary antibody conjugated to HRP and an ECL detection system.