



Datasheet for ABIN532972  
**anti-PPP1CA antibody (AA 30-299)**



[Go to Product page](#)

1 Image

2 Publications

### Overview

Quantity:	100 µL
Target:	PPP1CA
Binding Specificity:	AA 30-299
Reactivity:	Human
Host:	Mouse
Clonality:	Monoclonal
Conjugate:	This PPP1CA antibody is un-conjugated
Application:	Western Blotting (WB), ELISA, Immunocytochemistry (ICC), Immunofluorescence (IF)

### Product Details

Purpose:	Mouse monoclonal antibody raised against partial recombinant PPP1CA.
Immunogen:	Recombinant protein corresponding to amino acids 30-299 of human PPP1CA.
Clone:	4G3
Isotype:	IgG2a
Cross-Reactivity:	Human

### Target Details

Target:	PPP1CA
Alternative Name:	PPP1CA ( <a href="#">PPP1CA Products</a> )
Gene ID:	5499

## Target Details

---

NCBI Accession:	<a href="#">NM_002708</a>
Pathways:	<a href="#">M Phase, Cellular Glucan Metabolic Process, Regulation of Carbohydrate Metabolic Process, Lipid Metabolism</a>

## Application Details

---

Application Notes:	Western Blot (1:500-1:2000) The optimal working dilution should be determined by the end user.
Restrictions:	For Research Use only

## Handling

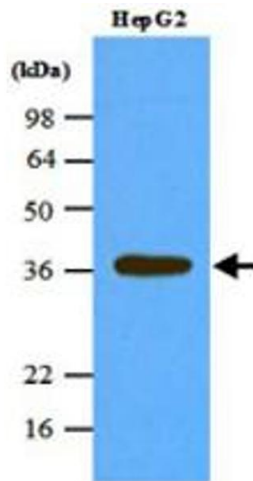
---

Format:	Liquid
Buffer:	In PBS, pH 7.4 (10 % glycerol, 0.02 % sodium azide).
Preservative:	Sodium azide
Precaution of Use:	This product contains Sodium azide: a POISONOUS AND HAZARDOUS SUBSTANCE which should be handled by trained staff only.
Storage:	-20 °C,-80 °C
Storage Comment:	Store at 2°C to 8°C for 1 week. For long term storage, aliquot and store at -20°C to -80°C. Aliquot to avoid repeated freezing and thawing.

## Publications

---

Product cited in:	Hsu, Huang, Seasholtz, Potter, Gollin: "Gene amplification and overexpression of protein phosphatase 1alpha in oral squamous cell carcinoma cell lines." in: <b>Oncogene</b> , Vol. 25, Issue 40, pp. 5517-26, (2006) ( <a href="#">PubMed</a> ).
	Cohen: "Protein phosphatase 1--targeted in many directions." in: <b>Journal of cell science</b> , Vol. 115, Issue Pt 2, pp. 241-56, (2002) ( <a href="#">PubMed</a> ).



### Western Blotting

**Image 1.** Western blot analysis of cell lysates of HepG2 (45 ug) were resolved by SDS - PAGE , transferred to NC membrane and probed with PPP1CA monoclonal antibody , clone 4G3 (1 : 1000) . Proteins were visualized using a goat anti - mouse secondary antibody conjugated to HRP and an ECL detection system.