



Datasheet for ABIN532984

anti-PSMA antibody (AA 117-351)



[Go to Product page](#)

1 Image

3 Publications

Overview

Quantity:	100 µL
Target:	PSMA (FOLH1)
Binding Specificity:	AA 117-351
Reactivity:	Human
Host:	Mouse
Clonality:	Monoclonal
Conjugate:	This PSMA antibody is un-conjugated
Application:	Western Blotting (WB), ELISA, Flow Cytometry (FACS), Immunofluorescence (IF), Immunocytochemistry (ICC)

Product Details

Purpose:	Mouse monoclonal antibody raised against partial recombinant FOLH1.
Immunogen:	Recombinant protein corresponding to amino acids 117-351 of human FOLH1.
Clone:	K1H7
Isotype:	IgG1
Cross-Reactivity:	Human

Target Details

Target:	PSMA (FOLH1)
Alternative Name:	PSMA / FOLH1 (FOLH1 Products)

Target Details

Gene ID: 2346

NCBI Accession: [NM_001014986](#)

Application Details

Application Notes: Western Blot (1:1000-1:3000)
The optimal working dilution should be determined by the end user.

Restrictions: For Research Use only

Handling

Format: Liquid

Buffer: In PBS, pH 7.4 (10 % glycerol, 0.02 % sodium azide).

Preservative: Sodium azide

Precaution of Use: This product contains Sodium azide: a POISONOUS AND HAZARDOUS SUBSTANCE which should be handled by trained staff only.

Storage: -20 °C,-80 °C

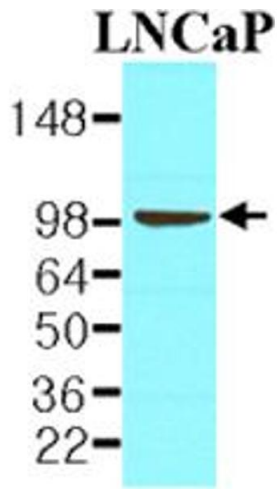
Storage Comment: Store at 2°C to 8°C for 1 week. For long term storage, aliquot and store at -20°C to -80°C. Aliquot to avoid repeated freezing and thawing.

Publications

Product cited in: Rajasekaran, Christiansen, Schmid, Oshima, Ryazantsev, Sakamoto, Weinstein, Rao, Rajasekaran: "Prostate-specific membrane antigen associates with anaphase-promoting complex and induces chromosomal instability." in: **Molecular cancer therapeutics**, Vol. 7, Issue 7, pp. 2142-51, (2008) ([PubMed](#)).

Slovin: "Targeting novel antigens for prostate cancer treatment: focus on prostate-specific membrane antigen." in: **Expert opinion on therapeutic targets**, Vol. 9, Issue 3, pp. 561-70, (2005) ([PubMed](#)).

Gregor, Wolchok, Turaga, Latouche, Sadelain, Bacich, Heston, Houghton, Scher: "Induction of autoantibodies to syngeneic prostate-specific membrane antigen by xenogeneic vaccination." in: **International journal of cancer. Journal international du cancer**, Vol. 116, Issue 3, pp. 415-21, (2005) ([PubMed](#)).



Western Blotting

Image 1. Western blot analysis of cell lysate of LNCaP (30 ug) was resolved by SDS - PAGE , transferred to NC membrane and probed with FOLH1 monoclonal antibody , clone k1H7 (1 : 1000) . Proteins were visualized using a goat anti - mouse secondary antibody conjugated to HRP and an ECL detection system.