

Datasheet for ABIN533010
anti-PRDM2 antibody (AA 1-347)[Go to Product page](#)

2 Images

3 Publications

Overview

Quantity:	400 µL
Target:	PRDM2
Binding Specificity:	AA 1-347
Reactivity:	Human
Host:	Mouse
Clonality:	Monoclonal
Conjugate:	This PRDM2 antibody is un-conjugated
Application:	Western Blotting (WB), Immunoprecipitation (IP)

Product Details

Purpose:	Mouse monoclonal antibody raised against partial recombinant PRDM2.
Immunogen:	Recombinant GST fusion protein corresponding to amino acids 1-347 of human PRDM2.
Clone:	33AT1045
Isotype:	IgG1
Cross-Reactivity:	Human, Mouse
Purification:	Purified

Target Details

Target:	PRDM2
Alternative Name:	PRDM2 (PRDM2 Products)

Target Details

Gene ID:	7799
NCBI Accession:	NM_012231 , NM_01586

Application Details

Application Notes:	Western Blot (1:1000) The optimal working dilution should be determined by the end user.
Restrictions:	For Research Use only

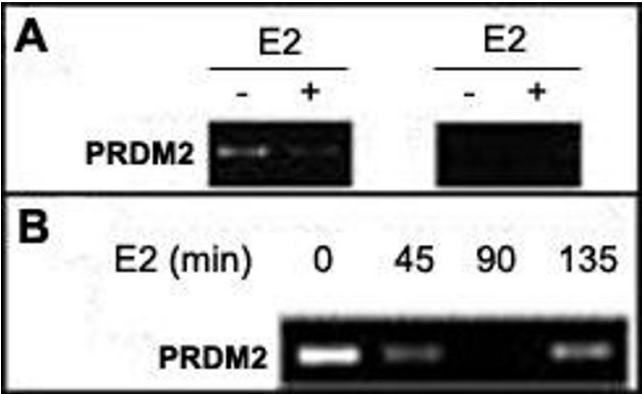
Handling

Format:	Liquid
Buffer:	In PBS (0.09 % sodium azide)
Preservative:	Sodium azide
Precaution of Use:	This product contains Sodium azide: a POISONOUS AND HAZARDOUS SUBSTANCE which should be handled by trained staff only.
Storage:	4 °C, -20 °C
Storage Comment:	Store at 4°C. For long term storage store at -20°C. Aliquot to avoid repeated freezing and thawing.

Publications

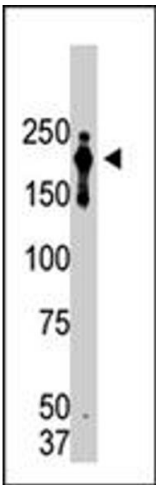
Product cited in:	<p>Cheng, Gao, Lou: "DNA methylation of the RIZ1 tumor suppressor gene plays an important role in the tumorigenesis of cervical cancer." in: European journal of medical research, Vol. 15, Issue 1, pp. 20-4, (2010) (PubMed).</p> <p>Harsløf, Husted, Carstens, Stenkjaer, Langdahl: "Genotypes and haplotypes of the estrogen receptor genes, but not the retinoblastoma-interacting zinc finger protein 1 gene, are associated with osteoporosis." in: Calcified tissue international, Vol. 87, Issue 1, pp. 25-35, (2010) (PubMed).</p> <p>de Vogel, Wouters, Gottschalk, van Schooten, de Goeij, de Bruijne, Goldbohm, van den Brandt, Weijenberg, van Engeland: "Genetic variants of methyl metabolizing enzymes and epigenetic regulators: associations with promoter CpG island hypermethylation in colorectal cancer." in: Cancer epidemiology, biomarkers & prevention : a publication of the American Association</p>
-------------------	--

Images



Immunoprecipitation

Image 1. A : Soluble chromatin was prepared from MCF-7 cells not treated or treated with E2 for 45 min. Immunoprecipitation was performed with PRDM2 monoclonal antibody, clone 33AT1045 . DNA extractions were amplified by using primer sets that cover the pS2 gene promoter region or the GAPDH gene promoter. B : Time course analysis of PRDM2 binding to the pS2 gene promoter. MCF-7 cells treated with E2 for different periods of time, as indicated at the top of each lane, were processed for ChIP analysis.



Western Blotting

Image 2. Western blot analysis of PRDM2 monoclonal antibody, clone 33AT1045 in lysate from transformed cells. Lane A : mock plasmid, Lane B : PRDM2 [1-347]-encoding plasmid. PRDM2 [1-347] (arrow) was detected using purified monoclonal antibody. Secondary HRP-anti-mouse was used for signal visualization with chemiluminescence.