

Datasheet for ABIN533162

**anti-TUBA1A antibody**[2 Images](#)[2 Publications](#)[Go to Product page](#)

## Overview

Quantity:	100 µL
Target:	TUBA1A (Tuba1a)
Reactivity:	Pig
Host:	Mouse
Clonality:	Monoclonal
Conjugate:	This TUBA1A antibody is un-conjugated
Application:	ELISA, Western Blotting (WB), Immunofluorescence (IF), Immunocytochemistry (ICC)

## Product Details

Purpose:	Mouse monoclonal antibody raised against full length native brain tubulin.
Immunogen:	Native purified tubulin from porcine brain.
Clone:	M154
Isotype:	IgG1
Cross-Reactivity:	Human, Mouse, Pig, Rat
Characteristics:	Antibody Reactive Against Native Purified Protein.

## Target Details

Target:	TUBA1A (Tuba1a)
Alternative Name:	Brain Tubulin ( <a href="#">Tuba1a Products</a> )
Pathways:	<a href="#">Microtubule Dynamics</a> , <a href="#">M Phase</a>

## Application Details

Application Notes:	ELISA (1:2000) Immunocytochemistry (1:200) Western Blot (1:1000) The optimal working dilution should be determined by the end user.
--------------------	--

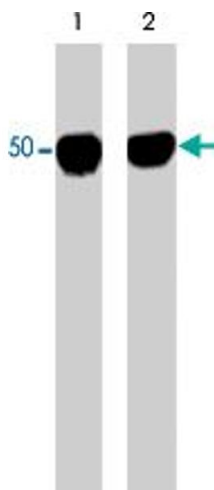
Restrictions:	For Research Use only
---------------	-----------------------

## Handling

Format:	Liquid
Buffer:	In PBS (50 % glycerol, 1 mg/mL BSA, 0.05 % sodium azide)
Preservative:	Sodium azide
Precaution of Use:	This product contains Sodium azide: a POISONOUS AND HAZARDOUS SUBSTANCE which should be handled by trained staff only.
Storage:	-20 °C
Storage Comment:	Store at -20°C. Aliquot to avoid repeated freezing and thawing.

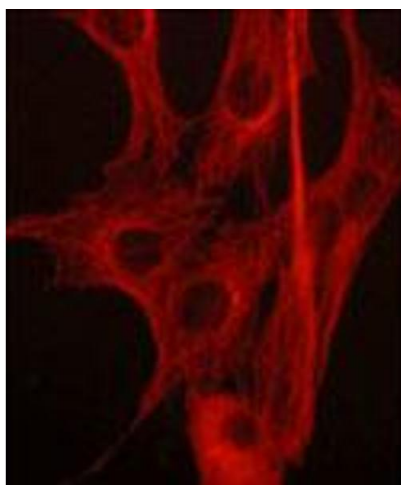
## Publications

Product cited in:	Fourest-Lieuvain, Peris, Gache, Garcia-Saez, Juillan-Binard, Lantéz, Job: "Microtubule regulation in mitosis: tubulin phosphorylation by the cyclin-dependent kinase Cdk1." in: <b>Molecular biology of the cell</b> , Vol. 17, Issue 3, pp. 1041-50, (2006) ( <a href="#">PubMed</a> ).  Westermann, Weber: "Post-translational modifications regulate microtubule function." in: <b>Nature reviews. Molecular cell biology</b> , Vol. 4, Issue 12, pp. 938-47, (2003) ( <a href="#">PubMed</a> ).
-------------------	---



#### Western Blotting

**Image 1.** Western blot analysis of purified human brain tubulin untreated (lane 1) or treated with ERK2 kinase to phosphorylate Ser-172 (lane 2). The blot was probed with Brain tubulin monoclonal antibody, clone M154 .



#### Immunocytochemistry

**Image 2.** Immunocytochemical labeling in C2C12 cells using Brain tubulin monoclonal antibody, clone M154 .