



[Go to Product page](#)

Datasheet for ABIN533406

anti-PRSS1 antibody (N-Term)

1 Image

Overview

| | |
|----------------------|--------------------------------------|
| Quantity: | 50 µL |
| Target: | PRSS1 |
| Binding Specificity: | N-Term |
| Reactivity: | Human |
| Host: | Rabbit |
| Clonality: | Monoclonal |
| Conjugate: | This PRSS1 antibody is un-conjugated |
| Application: | Western Blotting (WB), ELISA |

Product Details

| | |
|-------------------|--|
| Purpose: | Rabbit monoclonal antibody raised against synthetic peptide of PRSS1 . |
| Immunogen: | A synthetic peptide corresponding to N-terminus of human PRSS1 . |
| Clone: | A16-N |
| Isotype: | IgG |
| Cross-Reactivity: | Human |
| Characteristics: | Antibody Reactive Against Synthetic Peptide. |

Target Details

| | |
|-------------------|--|
| Target: | PRSS1 |
| Alternative Name: | Trypsin-1 / PRSS1 (PRSS1 Products) |

Target Details

Gene ID: 5644

Application Details

Application Notes: Western Blot (1:4000)
ELISA (1:20000-1:50000)
The optimal working dilution should be determined by the end user.

Restrictions: For Research Use only

Handling

Format: Liquid

Buffer: In 20 mM Tris-HCl, pH 8.0 (10 mg/mL BSA, 0.05 % sodium azide)

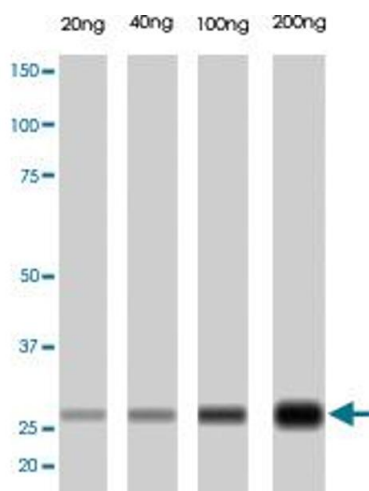
Preservative: Sodium azide

Precaution of Use: This product contains Sodium azide: a POISONOUS AND HAZARDOUS SUBSTANCE which should be handled by trained staff only.

Storage: 4 °C

Storage Comment: Store at 4°C.

Images



Western Blotting

Image 1. PRSS1 monoclonal antibody, clone A16-N .
Western blot of PRSS1 in human trypsin (Acris Antibodies GmbH; Trypsin-human pancreas; BA630) .