

Datasheet for ABIN533432

anti-LGI4 antibody**2** Images[Go to Product page](#)

Overview

| | |
|--------------|---|
| Quantity: | 100 µg |
| Target: | LGI4 |
| Reactivity: | Mouse |
| Host: | Rat |
| Clonality: | Monoclonal |
| Conjugate: | This LGI4 antibody is un-conjugated |
| Application: | Western Blotting (WB), Immunohistochemistry (Frozen Sections) (IHC (fro)) |

Product Details

| | |
|-------------------|--|
| Purpose: | Rat monoclonal antibody raised against synthetic peptide of Lgi4. |
| Immunogen: | A synthetic peptide (conjugated with BSA) corresponding to mouse Lgi4. |
| Clone: | KT18 |
| Isotype: | IgG1 |
| Cross-Reactivity: | Mouse |
| Characteristics: | Antibody Reactive Against Synthetic Peptide. |

Target Details

| | |
|-------------------|--|
| Target: | LGI4 |
| Alternative Name: | LGI4 (LGI4 Products) |
| Gene ID: | 243914 |

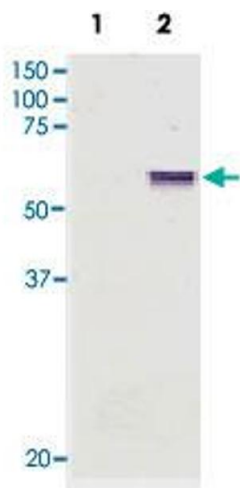
Application Details

| | |
|--------------------|---|
| Application Notes: | Western Blot (1:500) Immunohistochemistry (Frozen section) (1:100) The optimal working dilution should be determined by the end user. |
| Restrictions: | For Research Use only |

Handling

| | |
|--------------------|--|
| Format: | Liquid |
| Buffer: | In PBS (0.09 % sodium azide) |
| Preservative: | Sodium azide |
| Precaution of Use: | This product contains Sodium azide: a POISONOUS AND HAZARDOUS SUBSTANCE which should be handled by trained staff only. |
| Storage: | 4 °C,-20 °C |
| Storage Comment: | Store at 4°C. For long term storage store at -20°C. Aliquot to avoid repeated freezing and thawing. |

Images



Western Blotting

Image 1. Western blot of whole COS cell extracts using Lgi4 monoclonal antibody, clone KT18 . Cells were transfected with HA-Oct6 as negative control; 2. Cells were transfected with Lgi4-myc expression cassette. Courtesy of Dr. Dies Meijer.

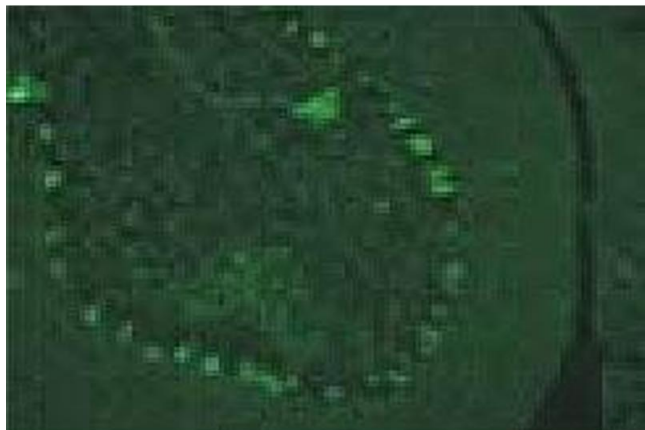


Image 2. Lgi4 is expressed in Purkinje cells of the cerebellum when detected by Lgi4 monoclonal antibody, clone KT18. Cryo-section was from adult mouse cerebellum. Courtesy of Dr. Dies Meijer.