

Datasheet for ABIN533442
anti-MAPRE3 antibody[Go to Product page](#)

1 Image

Overview

Quantity:	100 µg
Target:	MAPRE3
Reactivity:	Human
Host:	Rat
Clonality:	Monoclonal
Conjugate:	This MAPRE3 antibody is un-conjugated
Application:	ELISA, Immunofluorescence (IF)

Product Details

Purpose:	Rat monoclonal antibody raised against full length recombinant MAPRE3.
Immunogen:	Recombinant GST fusion protein corresponding to full length human MAPRE3.
Clone:	KT36
Isotype:	IgG2a
Cross-Reactivity:	Human
Characteristics:	Antibody Reactive Against Recombinant Protein.

Target Details

Target:	MAPRE3
Alternative Name:	MAPRE3 (MAPRE3 Products)
Gene ID:	22924

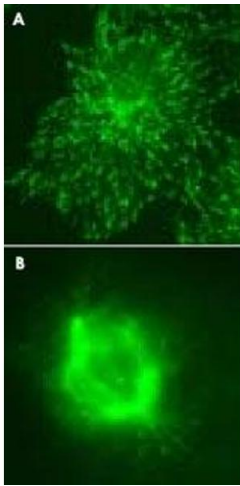
Application Details

Application Notes:	Immunofluorescence (1:100-1:1000) The optimal working dilution should be determined by the end user.
Restrictions:	For Research Use only

Handling

Format:	Liquid
Buffer:	In PBS (0.09 % sodium azide)
Preservative:	Sodium azide
Precaution of Use:	This product contains Sodium azide: a POISONOUS AND HAZARDOUS SUBSTANCE which should be handled by trained staff only.
Storage:	4 °C,-20 °C
Storage Comment:	Store at 4°C. For long term storage store at -20°C. Aliquot to avoid repeated freezing and thawing.

Images



Immunofluorescence

Image 1. Immunofluorescent staining for (A) MAPRE3 over expressed COS-7 cells and (B) cell mitosis with MAPRE3 monoclonal antibody, clone KT36 . Courtesy of Dr. Anna Akhmanova.