

Datasheet for ABIN533480

anti-Macrophage Scavenger Receptor 1 antibody**3** Images**2** Publications[Go to Product page](#)

Overview

Quantity:	50 µg
Target:	Macrophage Scavenger Receptor 1 (MSR1)
Reactivity:	Human
Host:	Mouse
Clonality:	Monoclonal
Conjugate:	This Macrophage Scavenger Receptor 1 antibody is un-conjugated
Application:	Western Blotting (WB), Immunohistochemistry (IHC), Immunoassay (IA)

Product Details

Purpose:	Mouse monoclonal antibody raised against recombinant MSR1.
Immunogen:	Recombinant protein corresponding to human MSR1.
Clone:	SRA-C6
Isotype:	IgG1
Cross-Reactivity:	Human
Characteristics:	Antibody Reactive Against Recombinant Protein.

Target Details

Target:	Macrophage Scavenger Receptor 1 (MSR1)
Alternative Name:	CD204 (MSR1 Products)
Gene ID:	4481

Application Details

Application Notes:	Immunohistochemistry (5 µg/mL) Western Blot (1 µg/mL) The optimal working dilution should be determined by the end user.
--------------------	--

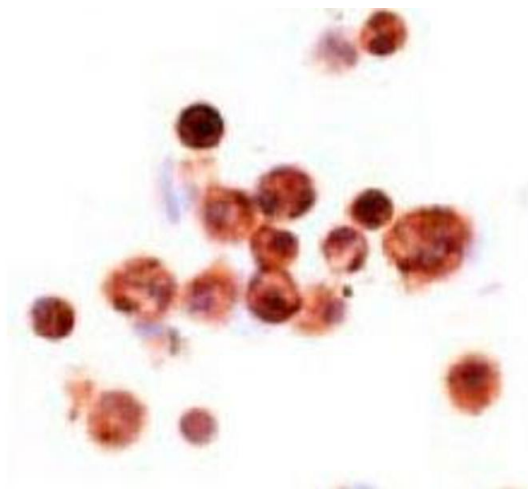
Restrictions:	For Research Use only
---------------	-----------------------

Handling

Format:	Liquid
Buffer:	In PBS (0.1 % proclin, 2.0 % Block Ace)
Preservative:	ProClin
Precaution of Use:	This product contains ProClin: a POISONOUS AND HAZARDOUS SUBSTANCE which should be handled by trained staff only.
Storage:	-20 °C
Storage Comment:	Store at -20°C. Aliquot to avoid repeated freezing and thawing.

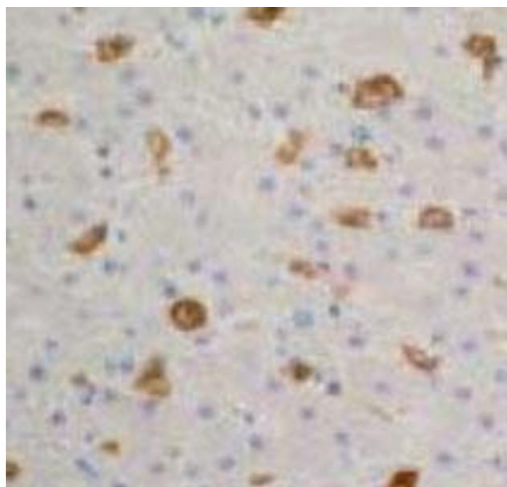
Publications

Product cited in:	<p>Fukuhara-Takaki, Sakai, Sakamoto, Takeya, Horiuchi: "Expression of class A scavenger receptor is enhanced by high glucose in vitro and under diabetic conditions in vivo: one mechanism for an increased rate of atherosclerosis in diabetes." in: The Journal of biological chemistry, Vol. 280, Issue 5, pp. 3355-64, (2005) (PubMed).</p> <p>Tomokiyo, Jinnouchi, Honda, Wada, Hanada, Hiraoka, Suzuki, Kodama, Takahashi, Takeya: "Production, characterization, and interspecies reactivities of monoclonal antibodies against human class A macrophage scavenger receptors." in: Atherosclerosis, Vol. 161, Issue 1, pp. 123-32, (2002) (PubMed).</p>
-------------------	--



Immunohistochemistry

Image 1. Immunohistochemical analysis of human alveolar macrophages, using MSR1 monoclonal antibody, clone SRA-C6 .



Immunohistochemistry

Image 2. Immunohistochemical analysis of human liver tissue, using MSR1 monoclonal antibody, clone SRA-C6 .

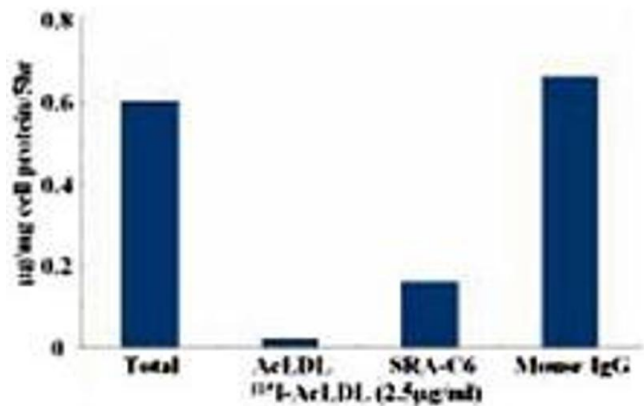


Image 3. Neutralizing activity of SRA-C6 (20 ug/mL) : Inhibitory effect of MSR1 monoclonal antibody, clone SRA-C6 on the degradation of ¹²⁵I-AcLDL by human monocyte-derived macrophages (day 7).