



[Go to Product page](#)

Datasheet for ABIN533615

## anti-CYP2A6 antibody (C-Term)

2 Images

3 Publications

### Overview

Quantity:	200 µg
Target:	CYP2A6
Binding Specificity:	C-Term
Reactivity:	Human
Host:	Mouse
Clonality:	Monoclonal
Conjugate:	This CYP2A6 antibody is un-conjugated
Application:	Western Blotting (WB), ELISA, Immunofluorescence (IF), Immunohistochemistry (Paraffin-embedded Sections) (IHC (p))

### Product Details

Purpose:	Mouse monoclonal antibody raised against synthetic peptide of CYP2A6.
Immunogen:	A synthetic peptide corresponding to C-terminus of human CYP2A6.
Clone:	F16 P2 D8
Isotype:	IgG1
Cross-Reactivity:	Human
Characteristics:	Antibody Reactive Against Synthetic Peptide.

### Target Details

Target:	CYP2A6
---------	--------

## Target Details

---

Alternative Name: CYP2A6 ([CYP2A6 Products](#))

Gene ID: 1548

## Application Details

---

Application Notes: Western Blot (1-2 µg/mL)  
The optimal working dilution should be determined by the end user.

Restrictions: For Research Use only

## Handling

---

Format: Liquid

Buffer: In PBS (0.08 % sodium azide)

Preservative: Sodium azide

Precaution of Use: This product contains Sodium azide: a POISONOUS AND HAZARDOUS SUBSTANCE which should be handled by trained staff only.

Storage: -20 °C

Storage Comment: Store at -20°C.  
Aliquot to avoid repeated freezing and thawing.

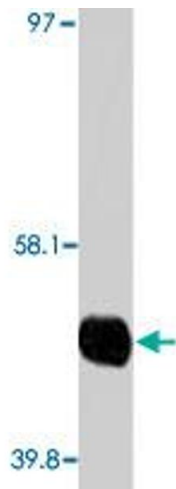
## Publications

---

Product cited in: Higashi, Nakajima, Katoh, Tokudome, Yokoi: "Inhibitory effects of neurotransmitters and steroids on human CYP2A6." in: **Drug metabolism and disposition: the biological fate of chemicals**, Vol. 35, Issue 4, pp. 508-14, (2007) ([PubMed](#)).

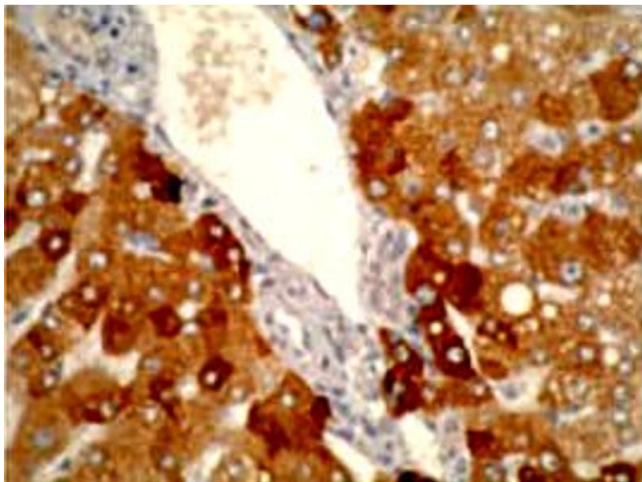
Audrain-McGovern, Al Koudsi, Rodriguez, Wileyto, Shields, Tyndale: "The role of CYP2A6 in the emergence of nicotine dependence in adolescents." in: **Pediatrics**, Vol. 119, Issue 1, pp. e264-74, (2007) ([PubMed](#)).

Swan, Benowitz, Lessov, Jacob, Tyndale, Wilhelmsen: "Nicotine metabolism: the impact of CYP2A6 on estimates of additive genetic influence." in: **Pharmacogenetics and genomics**, Vol. 15, Issue 2, pp. 115-25, (2005) ([PubMed](#)).



### Western Blotting

**Image 1.** Western blot analysis using CYP2A6 monoclonal antibody, clone F16 P2 D8 on recombinant CYP2A6 proteins at 1 ug/mL .



### Immunohistochemistry

**Image 2.** Immunohistochemistry staining using CYP2A6 monoclonal antibody, clone F16 P2 D8 on normal human liver tissue at 1 ug/mL .