



Datasheet for ABIN534024  
**anti-SIAH1/2 antibody (AA 280-331)**



[Go to Product page](#)

1 Image

1 Publication

## Overview

Quantity:	500 µL
Target:	SIAH1/2
Binding Specificity:	AA 280-331
Reactivity:	Human, Rat, Zebrafish (Danio rerio), Pig, Drosophila melanogaster
Host:	Mouse
Clonality:	Monoclonal
Conjugate:	This SIAH1/2 antibody is un-conjugated
Application:	Western Blotting (WB), Immunoprecipitation (IP)

## Product Details

Purpose:	Mouse monoclonal antibody raised against synthetic peptide of SIAH1/SIAH2.
Immunogen:	A synthetic peptide corresponding to amino acids 280-331 of drosophila SIAH1/SIAH2.
Clone:	8G7H12
Isotype:	IgG1
Specificity:	This antibody is specific to human SIAH 1 and 2 and Drosophila SINA in proliferating cells and stem cells. This antibody does not detect Drosophila SINAH or normal, nondividing cells.
Cross-Reactivity:	Drosophila melanogaster, Human, Pig, Rat, Zebrafish (Danio rerio)

## Target Details

Target:	SIAH1/2
---------	---------

## Target Details

---

Alternative Name: SIAH1/SIAH2 ([SIAH1/2 Products](#))

## Application Details

---

Application Notes: Western Blot (1:500)  
The optimal working dilution should be determined by the end user.

Restrictions: For Research Use only

## Handling

---

Format: Liquid

Buffer: In tissue culture supernatant (0.09 % sodium azide)

Preservative: Sodium azide

Precaution of Use: This product contains Sodium azide: a POISONOUS AND HAZARDOUS SUBSTANCE which should be handled by trained staff only.

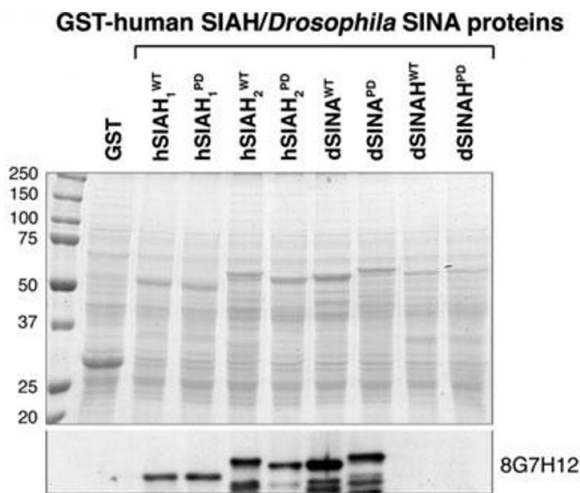
Storage: 4 °C

Storage Comment: Store at 4°C. Do not freeze.

## Publications

---

Product cited in: Schmidt, Park, Ahmed, Gundelach, Reed, Cheng, Knudsen, Tang: "Inhibition of RAS-mediated transformation and tumorigenesis by targeting the downstream E3 ubiquitin ligase seven in absentia homologue." in: **Cancer research**, Vol. 67, Issue 24, pp. 11798-810, (2007) ([PubMed](#)).



### Western Blotting

**Image 1.** SIAH1/SIAH2 monoclonal antibody, clone 8G7H12 recognize both Drosophila SINA and human SIAH. There are two SINA-like E3 ligases, SINA and SINAH, in Drosophila. SIAH1/SIAH2 monoclonal antibody, clone 8G7H12 is highly specific in recognizing both Drosophila SINA and human SIAH proteins but not Drosophila SINAH. Coomassie blue staining patterns of both the wild-type (WT) and dominant negative (PD) forms of affinity-purified recombinant GST-SINA/SINAH/SIAH fusion proteins are shown in the top panel. Protein standards were included and are shown in kDa. Cross-reactivity of SIAH1/SIAH2 monoclonal antibody, clone 8G7H12 against Drosophila SINA and SINAH, and human hSIAH-1 and hSIAH-2 proteins were determined. SIAH1/SIAH2 monoclonal antibody, clone 8G7H12 recognizes both human SIAH-1 and SIAH-2 protein. Photo courtesy of Dr. Amy Tang, Mayo Clinic Cancer Center.