



[Go to Product page](#)

Datasheet for ABIN534033  
**anti-Fibrillarlin antibody**

2 Images

2 Publications

### Overview

Quantity:	250 µL
Target:	Fibrillarlin (FBL)
Reactivity:	Saccharomyces cerevisiae
Host:	Mouse
Clonality:	Monoclonal
Conjugate:	This Fibrillarlin antibody is un-conjugated
Application:	Western Blotting (WB), Immunofluorescence (IF), Immunocytochemistry (ICC), Immunohistochemistry (Paraffin-embedded Sections) (IHC (p))

### Product Details

Purpose:	Mouse monoclonal antibody raised against native FBL.
Immunogen:	Native purified yeast FBL.
Clone:	38F3
Isotype:	IgG1
Specificity:	Detects a band of approximately 34 KDa and shows a clear and strong punctate staining of yeast nuclei.
Cross-Reactivity:	Drosophila melanogaster, Human, Nematode, Plant, Rat, Saccharomyces cerevisiae
Characteristics:	Antibody Reactive Against FBL.

## Target Details

---

Target:	Fibrillarin (FBL)
Alternative Name:	FBL ( <a href="#">FBL Products</a> )
Pathways:	<a href="#">Ribonucleoside Biosynthetic Process</a>

## Application Details

---

Application Notes:	The optimal working dilution should be determined by the end user.
Restrictions:	For Research Use only

## Handling

---

Format:	Liquid
Buffer:	In tissue culture supernatant (10 mM sodium azide)
Preservative:	Sodium azide
Precaution of Use:	This product contains Sodium azide: a POISONOUS AND HAZARDOUS SUBSTANCE which should be handled by trained staff only.
Storage:	4 °C,-20 °C
Storage Comment:	Store at 4°C for short term. For long term storage store at -20°C. Aliquot to avoid repeated freezing and thawing.

## Publications

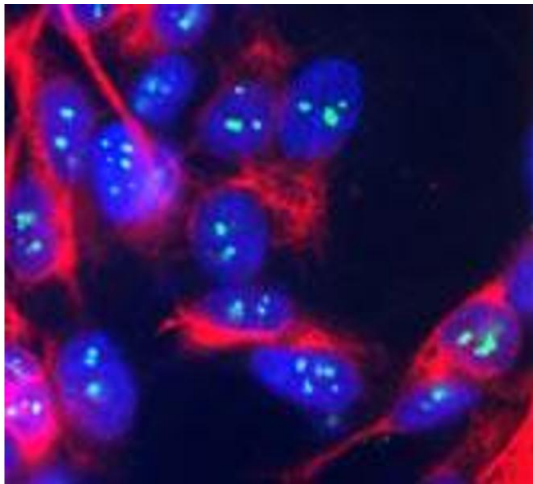
---

Product cited in:	<p>Tyagi, Alsmadi: "Imaging native beta-actin mRNA in motile fibroblasts." in: <b>Biophysical journal</b>, Vol. 87, Issue 6, pp. 4153-62, (2004) (<a href="#">PubMed</a>).</p> <p>Newton, Petfalski, Tollervey, Cáceres: "Fibrillarin is essential for early development and required for accumulation of an intron-encoded small nucleolar RNA in the mouse." in: <b>Molecular and cellular biology</b>, Vol. 23, Issue 23, pp. 8519-27, (2003) (<a href="#">PubMed</a>).</p>
-------------------	--



#### Western Blotting

**Image 1.** Western Blot analysis of yeast protein extracts stained with FBL monoclonal antibody, clone 38F3 . A single band at ~34kDa.



**Image 2.** Human SH-SY5Y cells stained with FBL monoclonal antibody, clone 38F3 , showing prominent specular nucleolar staining. The nuclei are counter stained with blue DAPI DNA stain, so these spots appear very pale blue.