

Datasheet for ABIN534100

**anti-BAP1 antibody****1** Image[Go to Product page](#)

## Overview

|              |   |
|--------------|---|
| Quantity:    | 100 µL  |
| Target:      | BAP1  |
| Reactivity:  | Human   |
| Host:        | Mouse   |
| Clonality:   | Monoclonal  |
| Conjugate:   | This BAP1 antibody is un-conjugated                                       |
| Application: | Western Blotting (WB), Immunofluorescence (IF), Immunocytochemistry (ICC) |

## Product Details

|                   |  |
|-------------------|--|
| Purpose:          | Mouse monoclonal antibody raised against full length recombinant BAP1. |
| Immunogen:        | Recombinant protein corresponding to full length human BAP1.           |
| Clone:            | 1G8  |
| Isotype:          | IgG1   |
| Cross-Reactivity: | Human  |
| Characteristics:  | Antibody Reactive Against Recombinant Protein.                         |

## Target Details

|                   |  |
|-------------------|--|
| Target:           | BAP1                                   |
| Alternative Name: | BAP1 ( <a href="#">BAP1 Products</a> ) |
| Gene ID:          | 8314                                   |

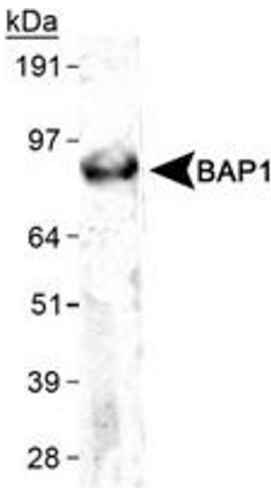
## Application Details

|                    |  |
|--------------------|--|
| Application Notes: | Immunocytochemistry (1:100)<br>Immunofluorescence (1:50-1:200)<br>Western Blot (2 µg/mL)<br>The optimal working dilution should be determined by the end user. |
| Restrictions:      | For Research Use only  |

## Handling

|                    |  |
|--------------------|--|
| Format:            | Liquid   |
| Buffer:            | In Tris-glycine, 150 mM NaCl (0.05 % sodium azide)   |
| Preservative:      | Sodium azide   |
| Precaution of Use: | This product contains Sodium azide: a POISONOUS AND HAZARDOUS SUBSTANCE which should be handled by trained staff only. |
| Storage:           | 4 °C, -20 °C   |
| Storage Comment:   | Store at 4°C for short term. For long term storage store at -20°C.<br>Aliquot to avoid repeated freezing and thawing.  |

## Images



**Western Blotting**

**Image 1.** Western blot analysis of BAP1 in HeLa whole cell lysate using BAP1 monoclonal antibody, clone 1G8 .