



[Go to Product page](#)

Datasheet for ABIN534130
anti-ATP1B1 antibody

1 Image

5 Publications

Overview

Quantity:	50 µL
Target:	ATP1B1
Reactivity:	Dog
Host:	Mouse
Clonality:	Monoclonal
Conjugate:	This ATP1B1 antibody is un-conjugated
Application:	Western Blotting (WB), Immunohistochemistry (IHC), Immunofluorescence (IF)

Product Details

Purpose:	Mouse monoclonal antibody raised against native ATP1A1.
Immunogen:	Native purified rabbit ATP1A1.
Clone:	464-6
Isotype:	IgG1 kappa
Specificity:	This antibody is specific to Na, K-ATPase alpha 1 subunit.
Cross-Reactivity:	Human, Rat

Target Details

Target:	ATP1B1
Alternative Name:	ATP1B1 (ATP1B1 Products)
Pathways:	Thyroid Hormone Synthesis , Ribonucleoside Biosynthetic Process , SARS-CoV-2 Protein

Target Details

[Interactome](#)

Application Details

Application Notes: Flow Cytometry (1:50-1:200)
Immunocytochemistry (1:50-1:200)
Immunofluorescence (1:100-1:1000)
Immunohistochemistry (Formalin/PFA-fixed paraffin-embedded sections) (1:200)
Western Blot (1:1000-1:10000)
The optimal working dilution should be

Restrictions: For Research Use only

Handling

Format: Liquid

Buffer: In ascites (0.09 % sodium azide)

Storage: -20 °C,-80 °C

Storage Comment: Store at -20°C or -80°C.
Aliquot to avoid repeated freezing and thawing.

Publications

Product cited in: Peyrottes, Navarro, Ondo-Mendez, Marcellin, Bellanger, Marsault, Lindenthal, Ettore, Darcourt, Pourcher: "Immunoanalysis indicates that the sodium iodide symporter is not overexpressed in intracellular compartments in thyroid and breast cancers." in: **European journal of endocrinology / European Federation of Endocrine Societies**, Vol. 160, Issue 2, pp. 215-25, (2009) ([PubMed](#)).

Winterstein, Trotter, Krämer-Albers: "Distinct endocytic recycling of myelin proteins promotes oligodendroglial membrane remodeling." in: **Journal of cell science**, Vol. 121, Issue Pt 6, pp. 834-42, (2008) ([PubMed](#)).

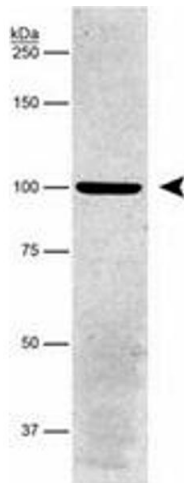
Burgess, Parkinson, Racke, Hirsch-Reinshagen, Fan, Wong, Stukas, Theroux, Chan, Donkin, Wilkinson, Balik, Christie, Poirier, Lütjohann, Demattos, Wellington: "ABCG1 influences the brain cholesterol biosynthetic pathway but does not affect amyloid precursor protein or apolipoprotein E metabolism in vivo." in: **Journal of lipid research**, Vol. 49, Issue 6, pp. 1254-67,

(2008) ([PubMed](#)).

Jahn, Leifheit, Gooch, Sindhu, Weinberg: "Lipid rafts are required for Kit survival and proliferation signals." in: **Blood**, Vol. 110, Issue 6, pp. 1739-47, (2007) ([PubMed](#)).

Padilla, Cottrell, Roosterman, Pikios, Muller, Steinhoff, Bunnett: "Endothelin-converting enzyme-1 regulates endosomal sorting of calcitonin receptor-like receptor and beta-arrestins." in: **The Journal of cell biology**, Vol. 179, Issue 5, pp. 981-97, (2007) ([PubMed](#)).

Images



Western Blotting

Image 1. Western blot analysis detecting ATP1A1 in porcine proximal tubule protein, using ATP1A1 monoclonal antibody, clone 464.6 .