

Datasheet for ABIN534140

anti-ABCA1 antibody



[Go to Product page](#)

1 Image

1 Publication

Overview

| | |
|--------------|--------------------------------------|
| Quantity: | 100 µL |
| Target: | ABCA1 |
| Reactivity: | Please inquire |
| Host: | Rat |
| Clonality: | Monoclonal |
| Conjugate: | This ABCA1 antibody is un-conjugated |
| Application: | Flow Cytometry (FACS) |

Product Details

| | |
|--------------|--|
| Purpose: | Rat monoclonal antibody raised against recombinant Abca1. |
| Immunogen: | Recombinant protein corresponding extracellular region of mouse Abca1. |
| Clone: | 5A1-1422-11 |
| Isotype: | IgG2a kappa |
| Specificity: | This antibody is specific to ABCA1. |

Target Details

| | |
|-------------------|---|
| Target: | ABCA1 |
| Alternative Name: | ABCA1 (ABCA1 Products) |
| Pathways: | Cellular Response to Molecule of Bacterial Origin , cAMP Metabolic Process , Regulation of Lipid Metabolism by PPARalpha , Lipid Metabolism |

Application Details

Application Notes: Flow Cytometry (1:1000-1:30000)
The optimal working dilution should be determined by the end user.

Restrictions: For Research Use only

Handling

Format: Liquid
Buffer: In antiserum (0.09 % sodium azide)

Storage: -20 °C,-80 °C

Storage Comment: Store at -20°C or -80°C.
Aliquot to avoid repeated freezing and thawing.

Publications

Product cited in: Suzuki, Okuno, Yamamoto, Pasterkamp, Takegahara, Takamatsu, Kitao, Takagi, Rennert, Kolodkin, Kumanogoh, Kikutani: "Semaphorin 7A initiates T-cell-mediated inflammatory responses through alpha1beta1 integrin." in: **Nature**, Vol. 446, Issue 7136, pp. 680-4, (2007) ([PubMed](#)).

Images

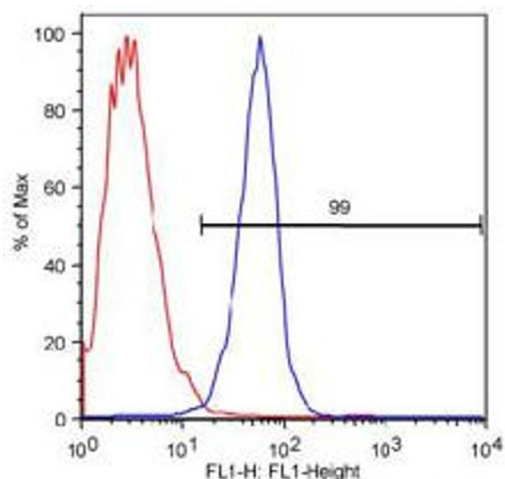


Image 1. FACS analysis of Raw (red) and Raw-cAMP (blue) cells using Abca1 monoclonal antibody, clone 5A1-1422.11 at a dilution of 1 : 4,000.