



[Go to Product page](#)

Datasheet for ABIN534450
anti-BIM antibody (AA 176-280)

2 Images

Overview

Quantity:	100 µg
Target:	BIM (BCL2L11)
Binding Specificity:	AA 176-280
Reactivity:	Human
Host:	Mouse
Clonality:	Monoclonal
Conjugate:	This BIM antibody is un-conjugated
Application:	Western Blotting (WB), Immunocytochemistry (ICC)

Product Details

Purpose:	Mouse monoclonal antibody raised against recombinant BCL2L11.
Immunogen:	Recombinant protein corresponding to amino acids 176-280 of human BCL2L11.
Clone:	1C2C8
Isotype:	IgG
Cross-Reactivity:	Human, Mouse

Target Details

Target:	BIM (BCL2L11)
Alternative Name:	Bcl-2-like 11 (BCL2L11 Products)
Gene ID:	10018

Target Details

Pathways: [PI3K-Akt Signaling](#), [Neurotrophin Signaling Pathway](#), [Tube Formation](#), [Positive Regulation of Endopeptidase Activity](#)

Application Details

Application Notes: Western Blot (0.5-1 µg/mL)
The optimal working dilution should be determined by the end user.

Restrictions: For Research Use only

Handling

Format: Liquid

Buffer: In PBS (0.02 % sodium azide)

Preservative: Sodium azide

Precaution of Use: This product contains Sodium azide: a POISONOUS AND HAZARDOUS SUBSTANCE which should be handled by trained staff only.

Storage: 4 °C, -20 °C

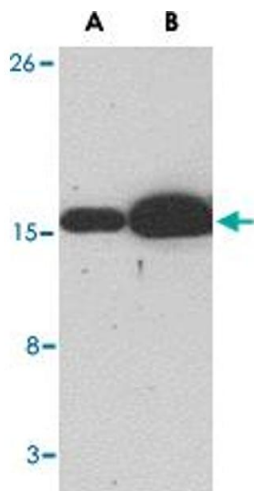
Storage Comment: Store at 4°C for three months. For long term storage store at -20°C.
Aliquot to avoid repeated freezing and thawing.

Images



Immunocytochemistry

Image 1. Immunocytochemistry of BCL2L11 in K-562 cells with BCL2L11 monoclonal antibody, clone 1C2C8 at 10 µg/mL .



Western Blotting

Image 2. Western blot analysis of (A) 5 and (B) 25 ng of BCL2L11 recombinant protein with BCL2L11 monoclonal antibody, clone 1C2C8 at 1 ug/mL .