

Datasheet for ABIN534875

anti-MAT2A antibody[2 Images](#)[2 Publications](#)[Go to Product page](#)

Overview

Quantity:	100 µL
Target:	MAT2A
Reactivity:	Human
Host:	Mouse
Clonality:	Monoclonal
Conjugate:	This MAT2A antibody is un-conjugated
Application:	Western Blotting (WB), ELISA, Immunohistochemistry (Paraffin-embedded Sections) (IHC (p)), Immunocytochemistry (ICC), Immunofluorescence (IF)

Product Details

Purpose:	Mouse monoclonal antibody raised against full length recombinant MAT2A.
Immunogen:	Recombinant protein corresponding to full length human MAT2A.
Clone:	AT3A2
Isotype:	IgG2b
Cross-Reactivity:	Human

Target Details

Target:	MAT2A
Alternative Name:	MAT2A (MAT2A Products)
Gene ID:	4144

Target Details

Pathways: [Ribonucleoside Biosynthetic Process](#), [Methionine Biosynthetic Process](#)

Application Details

Application Notes: The optimal working dilution should be determined by the end user.

Restrictions: For Research Use only

Handling

Format: Liquid

Buffer: In PBS, pH 7.4 (10 % glycerol, 0.02 % sodium azide).

Preservative: Sodium azide

Precaution of Use: This product contains Sodium azide: a POISONOUS AND HAZARDOUS SUBSTANCE which should be handled by trained staff only.

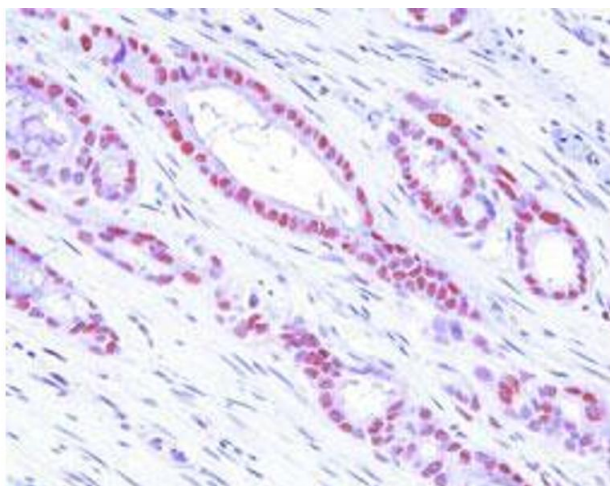
Storage: -20 °C,-80 °C

Storage Comment: Store at 2°C to 8°C for 1 week. For long term storage, aliquot and store at -20°C to -80°C. Aliquot to avoid repeated freezing and thawing.

Publications

Product cited in: Ramani, Yang, Xia, Ara, Mato, Lu: "Leptin's mitogenic effect in human liver cancer cells requires induction of both methionine adenosyltransferase 2A and 2beta." in: **Hepatology (Baltimore, Md.)**, Vol. 47, Issue 2, pp. 521-31, (2008) ([PubMed](#)).

Chen, Xia, Lin, Yang, Kuhlenkamp, Li, Sodir, Chen, Josef-Lenz, Laird, Clarke, Mato, Lu: "Role of methionine adenosyltransferase 2A and S-adenosylmethionine in mitogen-induced growth of human colon cancer cells." in: **Gastroenterology**, Vol. 133, Issue 1, pp. 207-18, (2007) ([PubMed](#)).



Immunohistochemistry

Image 1. Paraffin embedded sections of human colon cancer tissue were incubated with MAT2A monoclonal antibody, clone AT3A2 (Cat # MAB3213 ; 1 : 50) for 2 hours at room temperature. Antigen retrieval was performed in 100 mM sodium citrate buffer and detected using Diaminobenzidine (DAB).

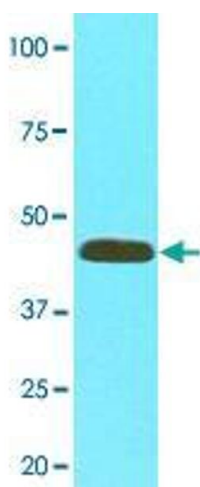


Image 2. Cell lysates of HepG2 (20 ug) were resolved by SDS-PAGE, transferred to NC membrane and probed with MAT2A monoclonal antibody, clone AT3A2 (Cat # MAB3213 ; 1 : 1000). Proteins were visualized using a goat anti-mouse secondary antibody conjugated to HRP and an ECL detection system.