

Datasheet for ABIN534936  
**anti-BU-1A / B6.1 antibody**[Go to Product page](#)

## 1 Image

## Overview

Quantity:	500 µg
Target:	BU-1A / B6.1
Reactivity:	Chicken
Host:	Mouse
Clonality:	Monoclonal
Conjugate:	This BU-1A / B6.1 antibody is un-conjugated
Application:	Flow Cytometry (FACS), Immunoprecipitation (IP), Immunohistochemistry (Frozen Sections) (IHC (fro))

## Product Details

Purpose:	Mouse monoclonal antibody raised against Bu-1a.
Immunogen:	Bursal cells from one-day-old H.B15 (Bu-1 a/b) strain chickens.
Clone:	21-1A4
Isotype:	IgG1
Specificity:	Chicken Bu-1a alloantigen, Mr 70 KDa.
Cross-Reactivity:	Chicken

## Target Details

Target:	BU-1A / B6.1
Alternative Name:	Bu-1a ( <a href="#">BU-1A / B6.1 Products</a> )

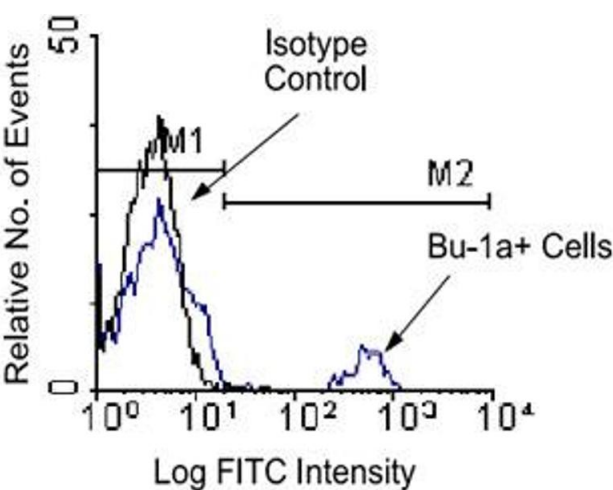
Application Details

Application Notes:	Flow Cytometry (1 µg/10 <sup>6</sup> cells) The optimal working dilution should be determined by the end user.
Restrictions:	For Research Use only

Handling

Format:	Liquid
Buffer:	In 100 mM BBS, pH 8.2
Storage:	4 °C
Storage Comment:	Store at 4°C.

Images



**Image 1.** Chicken peripheral blood mononuclear cells were first incubated with purified Chicken Bu-1a monoclonal antibody, clone 21-1A4 and then counter-stained with goat anti-mouse IgG-FITC. Small lymphocytes were gated using light scatter criteria and analyzed on a FACScan™ flow cytometer (BDB, San Jose, CA).