

Datasheet for ABIN535106
anti-BCL2L13 antibody[Go to Product page](#)

1 Image

Overview

Quantity:	100 µg
Target:	BCL2L13
Reactivity:	Human
Host:	Mouse
Clonality:	Monoclonal
Conjugate:	This BCL2L13 antibody is un-conjugated
Application:	Western Blotting (WB), Immunofluorescence (IF), Immunoprecipitation (IP), Immunocytochemistry (ICC)

Product Details

Purpose:	Mouse monoclonal antibody raised against recombinant BCL2L13.
Immunogen:	Recombinant tag fusion protein corresponding to human BCL2L13.
Clone:	Rocky-2
Isotype:	IgG1
Specificity:	Recognizes the C-terminus of human Bcl-rambo (amino acids 224-459). Detects endogenous proteins by ICC, IP and WB.
Cross-Reactivity:	Human

Target Details

Target:	BCL2L13
---------	---------

Target Details

Alternative Name:	Bcl-2-like 13 (BCL2L13 Products)
Gene ID:	23786
Pathways:	Positive Regulation of Endopeptidase Activity

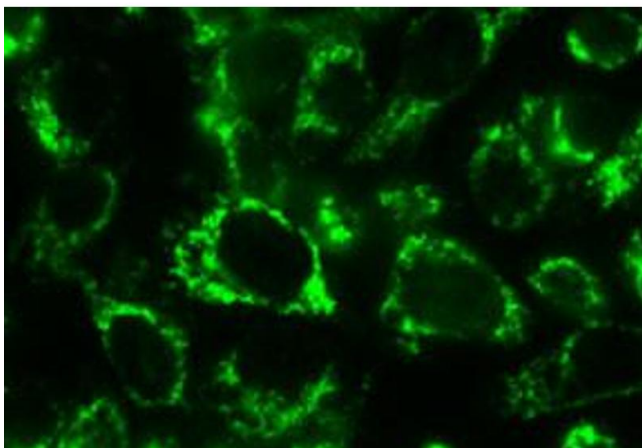
Application Details

Application Notes:	Western Blot (1:1000) Immunoprecipitation (1:100) Immunocytochemistry (1:300) The optimal working dilution should be determined by the end user.
Restrictions:	For Research Use only

Handling

Format:	Liquid
Buffer:	In PBS (0.02 % sodium azide)
Preservative:	Sodium azide
Precaution of Use:	This product contains Sodium azide: a POISONOUS AND HAZARDOUS SUBSTANCE which should be handled by trained staff only.
Storage:	4 °C,-20 °C
Storage Comment:	Store at 4°C. For long term storage store at -20°C. Aliquot to avoid repeated freezing and thawing.

Images



Immunofluorescence

Image 1. Immunofluorescence microscopy showing the detection of endogenous BCL2L13 in HeLa cells with the antibody to BCL2L13 monoclonal antibody, clone Rocky-2 .