

Datasheet for ABIN536117  
**anti-FCGR3B antibody (PE)**[Go to Product page](#)

1 Image

1 Publication

## Overview

Quantity:	100 reactions
Target:	FCGR3B
Reactivity:	Human
Host:	Mouse
Clonality:	Monoclonal
Conjugate:	This FCGR3B antibody is conjugated to PE
Application:	Flow Cytometry (FACS)

## Product Details

Purpose:	Mouse monoclonal antibody raised against native FCGR3B.
Immunogen:	Native purified FCGR3B from human granulocytes.
Clone:	MEM-154
Isotype:	IgG1
Specificity:	This antibody reacts with the epitope on CD16 antigen that residing in proximity to FG loop (probably BC or C'E loop). This antibody reacts with CD16+ granulocytes.
Cross-Reactivity:	Human

## Target Details

Target:	FCGR3B
Alternative Name:	CD16b ( <a href="#">FCGR3B Products</a> )

## Target Details

---

Gene ID: 2215

## Application Details

---

Application Notes: Flow Cytometry (20 µL in human blood cells 100 µL in whole blood or 10<sup>6</sup> cells in a suspension)  
The optimal working dilution should be determined by the end user.

Restrictions: For Research Use only

## Handling

---

Format: Liquid

Buffer: In PBS (0.2 % BSA, 0.09 % sodium azide)

Preservative: Sodium azide

Precaution of Use: This product contains Sodium azide: a POISONOUS AND HAZARDOUS SUBSTANCE which should be handled by trained staff only.

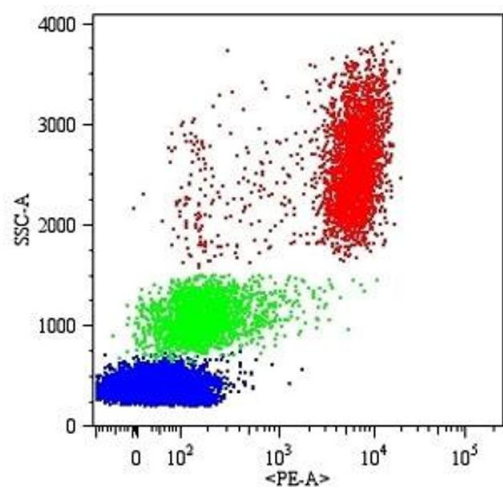
Storage: 4 °C

Storage Comment: Store in the dark at 4°C. Do not freeze.  
Avoid prolonged exposure to light.  
Aliquot to avoid repeated freezing and thawing.

## Publications

---

Product cited in: Arase, Arase, Hirano, Yokosuka, Sakurai, Saito: "IgE-mediated activation of NK cells through Fc gamma RIII." in: **Journal of immunology (Baltimore, Md. : 1950)**, Vol. 170, Issue 6, pp. 3054-8, (2003) ([PubMed](#)).



### Flow Cytometry

**Image 1.** Surface staining of human peripheral blood cells with FCGR3B monoclonal antibody, clone MEM-154 (PE) .