

Datasheet for ABIN537088

anti-SCD antibody[Go to Product page](#)**1** Image

Overview

Quantity:	100 µg
Target:	SCD
Reactivity:	Human
Host:	Mouse
Clonality:	Monoclonal
Conjugate:	This SCD antibody is un-conjugated
Application:	ELISA, Western Blotting (WB), Immunohistochemistry (IHC), Immunoprecipitation (IP)

Product Details

Purpose:	Mouse monoclonal antibody raised against full length recombinant SCD.
Immunogen:	Recombinant protein corresponding to full length human SCD.
Clone:	CD-E10
Isotype:	IgG2
Cross-Reactivity:	Human, Mouse

Target Details

Target:	SCD
Alternative Name:	SCD / SCD1 (SCD Products)
Gene ID:	6319
Pathways:	Brown Fat Cell Differentiation

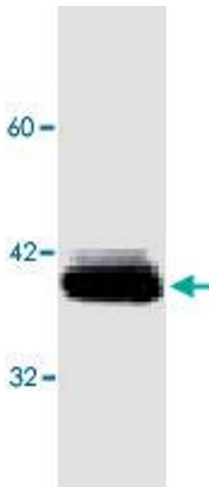
Application Details

Application Notes:	The optimal working dilution should be determined by the end user.
Restrictions:	For Research Use only

Handling

Format:	Liquid
Buffer:	In PBS, pH 7.4 (0.05 % sodium azide)
Preservative:	Sodium azide
Precaution of Use:	This product contains Sodium azide: a POISONOUS AND HAZARDOUS SUBSTANCE which should be handled by trained staff only.
Storage:	4 °C,-20 °C
Storage Comment:	Store at 4°C. For long term storage store at -20°C. Aliquot to avoid repeated freezing and thawing.

Images



Western Blotting

Image 1. Western blot analysis of SCD expression in 293 cells with SCD monoclonal antibody, clone CD.E10 .