



[Go to Product page](#)

Datasheet for ABIN537340

## anti-Serotonin Receptor 3A antibody (AA 21-36)

### 1 Image

#### Overview

Quantity:	100 µg
Target:	Serotonin Receptor 3A (HTR3A)
Binding Specificity:	AA 21-36
Reactivity:	Human, Rat
Host:	Rabbit
Clonality:	Polyclonal
Conjugate:	This Serotonin Receptor 3A antibody is un-conjugated
Application:	Western Blotting (WB)

#### Product Details

Purpose:	Rabbit polyclonal antibody raised against synthetic peptide of Htr3a.
Immunogen:	A mixture of synthetic peptides corresponding to amino acids 21-36 and 421-436 of rat Htr3a.
Cross-Reactivity:	Human, Rat

#### Target Details

Target:	Serotonin Receptor 3A (HTR3A)
Abstract:	<a href="#">HTR3A Products</a>
Gene ID:	79246
Pathways:	<a href="#">Synaptic Membrane</a>

## Application Details

Application Notes: The optimal working dilution should be determined by the end user.

Restrictions: For Research Use only

## Handling

Format: Liquid

Buffer: In PBS (0.05 % BSA, 0.05 % sodium azide)

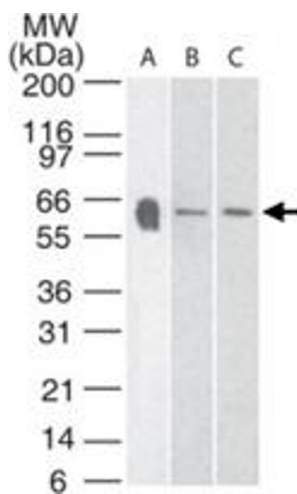
Preservative: Sodium azide

Precaution of Use: This product contains Sodium azide: a POISONOUS AND HAZARDOUS SUBSTANCE which should be handled by trained staff only.

Storage: 4 °C, -20 °C

Storage Comment: Store at 4°C. For long term storage store at -20°C.  
Aliquot to avoid repeated freezing and thawing.

## Images



### Western Blotting

**Image 1.** Western blot analysis of Htr3a in A) human, B) mouse and C) rat brain tissue lysate using Htr3a polyclonal antibody at 3 ug/mL .