

Datasheet for ABIN537382
anti-TLR11 antibody (AA 900-950)[Go to Product page](#)

2 Images

Overview

Quantity:	100 µg
Target:	TLR11 (Tlr11)
Binding Specificity:	AA 900-950
Reactivity:	Mouse
Host:	Rabbit
Clonality:	Polyclonal
Conjugate:	This TLR11 antibody is un-conjugated
Application:	Western Blotting (WB), Flow Cytometry (FACS)

Product Details

Purpose:	Rabbit polyclonal antibody raised against synthetic peptide of Tlr11.
Immunogen:	A synthetic peptide corresponding to amino acids 900-950 of mouse Tlr11.
Cross-Reactivity:	Mouse

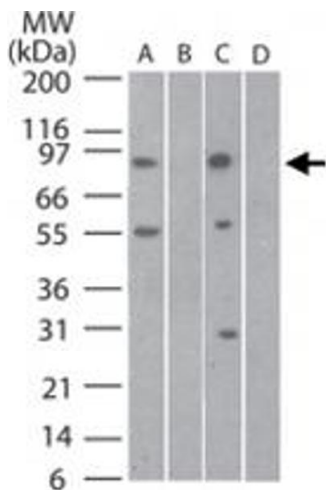
Target Details

Target:	TLR11 (Tlr11)
Alternative Name:	TLR11 (Tlr11 Products)
Gene ID:	239081
Pathways:	Activation of Innate immune Response

Application Details

Application Notes:	The optimal working dilution should be determined by the end user.
Restrictions:	For Research Use only
Handling	
Format:	Liquid
Buffer:	In PBS (0.05 % BSA, 0.05 % sodium azide)
Preservative:	Sodium azide
Precaution of Use:	This product contains Sodium azide: a POISONOUS AND HAZARDOUS SUBSTANCE which should be handled by trained staff only.
Storage:	4 °C,-20 °C
Storage Comment:	Store at 4°C. For long term storage store at -20°C. Aliquot to avoid repeated freezing and thawing.

Images



Western Blotting

Image 1. Western blot analysis of Tlr11 in mouse testis lysate in A) the absence and B) presence of blocking peptide and rat testis lysate in C) the absence and D) presence of blocking peptide using Tlr11 polyclonal antibody at 3 ug/mL.

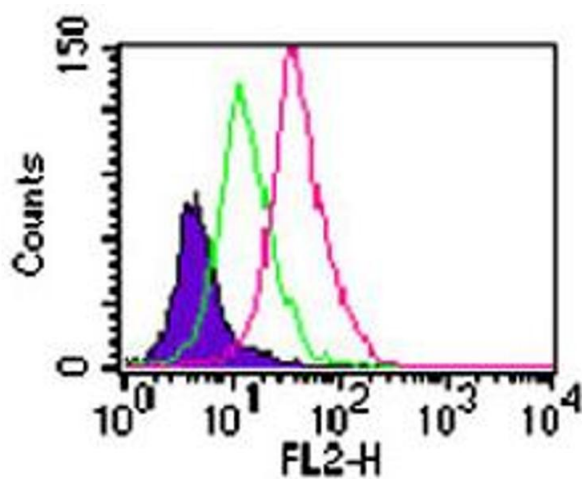


Image 2. Intracellular flow analysis of Tlr11 in Balb/c mouse splenocytes. Using Tlr11 polyclonal antibody at $0.5 \mu\text{g}/10^6$ cells. Shaded histogram represents cells without antibody; Green represents rabbit IgG isotype control; red represents anti-TLR11 antibody. Goat anti-rabbit PE was used as secondary antibody.