

Datasheet for ABIN537397  
**anti-Caspase 6 antibody**

3 Images

1 Publication

[Go to Product page](#)

## Overview

Quantity:	50 µL
Target:	Caspase 6 (CASP6)
Reactivity:	Human, Mouse, Rat, Dog, Gerbil
Host:	Rabbit
Clonality:	Polyclonal
Conjugate:	This Caspase 6 antibody is un-conjugated
Application:	Western Blotting (WB), Immunohistochemistry (Paraffin-embedded Sections) (IHC (p)), Immunoprecipitation (IP)

## Product Details

Purpose:	Rabbit polyclonal antibody raised against full length recombinant CASP6.
Immunogen:	Recombinant protein corresponding to full length active human CASP6.

## Target Details

Target:	Caspase 6 (CASP6)
Alternative Name:	Caspase-6 ( <a href="#">CASP6 Products</a> )
Pathways:	<a href="#">Apoptosis</a> , <a href="#">Caspase Cascade in Apoptosis</a>

## Application Details

Application Notes:	The optimal working dilution should be determined by the end user.
--------------------	--

## Application Details

Restrictions: For Research Use only

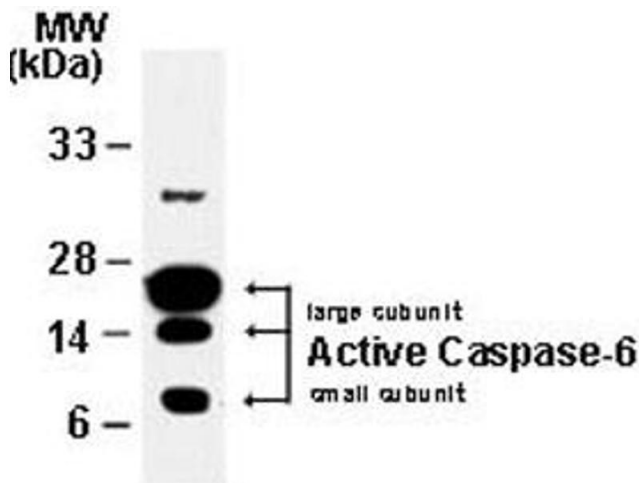
## Handling

Format:	Liquid
Buffer:	In serum (0.05 % sodium azide)
Storage:	-20 °C
Storage Comment:	Store at -20°C. Aliquot to avoid repeated freezing and thawing.

## Publications

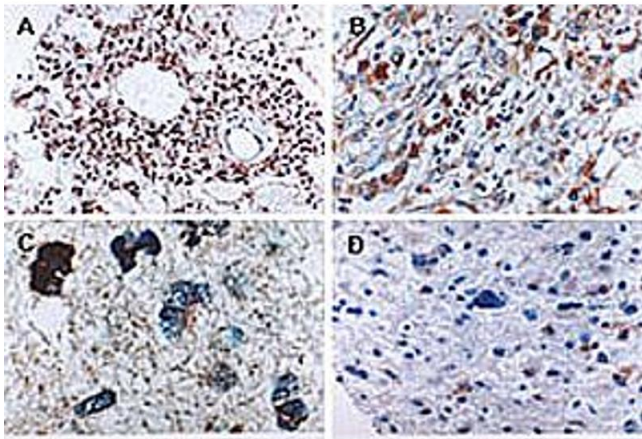
Product cited in: Ashida, Maeda, Kinoshita: "DPM1, the catalytic subunit of dolichol-phosphate mannose synthase, is tethered to and stabilized on the endoplasmic reticulum membrane by DPM3." in: **The Journal of biological chemistry**, Vol. 281, Issue 2, pp. 896-904, (2006) ([PubMed](#)).

## Images



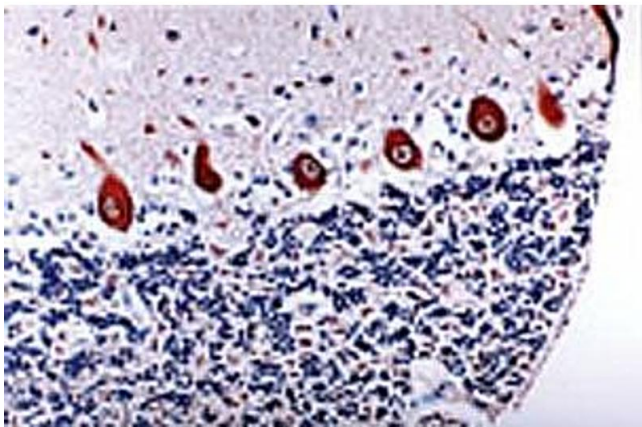
### Western Blotting

**Image 1.** Western blot analysis of Caspase-6. Recombinant catalytically active CASP6 was western blotted with Active/Cleaved CASP6 polyclonal antibody. The antisera detected both the large and small subunits of Active/Cleaved CASP6.



#### Immunohistochemistry

**Image 2.** Formalin-fixed paraffin-embedded tissue sections of human glioma stained for Active/Cleaved CASP6 expression. Using Active/Cleaved CASP6 polyclonal antibody at 1 : 2000. Gemistocytoma (low grade tumor) at low (A) and high (B) magnification. Two examples of anaplastic, high grade (III) infiltrating gliomas (C and D) . Increased active/cleaved Caspase-6 may be seen in high grade, compared to low grade tumors. Hematoxylin-eosin counterstain.



#### Immunohistochemistry

**Image 3.** Formalin-fixed paraffin-embedded tissue section of dog cerebellum stained for Active/Cleaved CASP6 expression. Using Active/Cleaved CASP6 polyclonal antibody at 1 : 2000. Hematoxylin-eosin counterstain.