

Datasheet for ABIN537480

anti-BAG1 antibody**2** Images[Go to Product page](#)

Overview

Quantity:	50 µL
Target:	BAG1
Reactivity:	Cow
Host:	Rabbit
Clonality:	Polyclonal
Conjugate:	This BAG1 antibody is un-conjugated
Application:	Immunohistochemistry (Paraffin-embedded Sections) (IHC (p)), Immunoprecipitation (IP)

Product Details

Purpose:	Rabbit polyclonal antibody raised against synthetic peptide of Bag1.
Immunogen:	A synthetic peptide corresponding to amino acids 205-219 of mouse BAG1.
Sequence:	QETERLQSTN LALAE
Cross-Reactivity:	Dog, Human, Mouse, Rat

Target Details

Target:	BAG1
Alternative Name:	BAG1 (BAG1 Products)

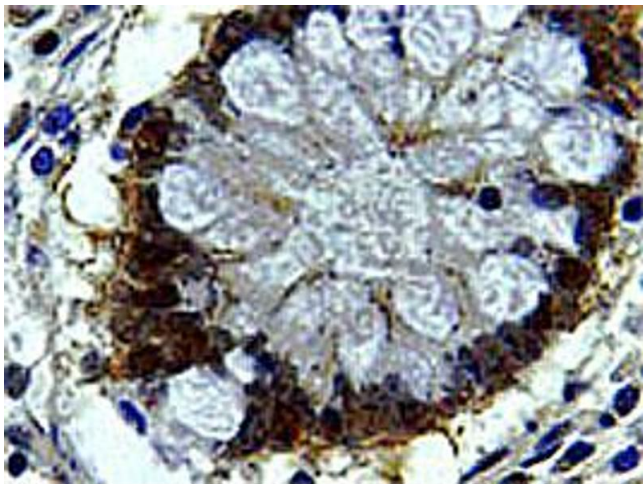
Application Details

Application Notes:	The optimal working dilution should be determined by the end user.
--------------------	--

Application Details

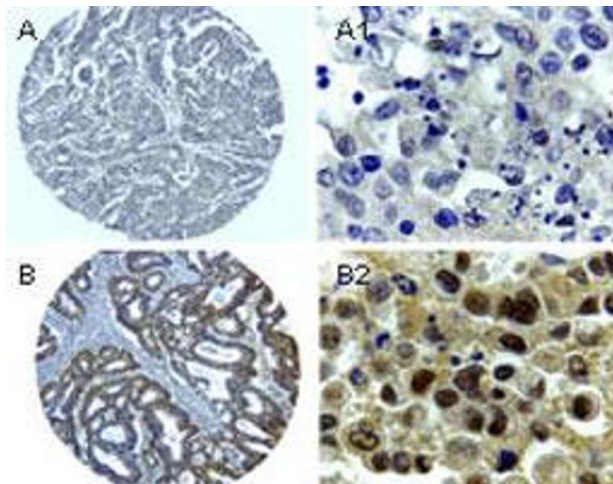
Restrictions:	For Research Use only
Handling	
Format:	Liquid
Buffer:	In serum (0.05 % sodium azide)
Storage:	-20 °C
Storage Comment:	Store at -20°C. Aliquot to avoid repeated freezing and thawing.

Images



Immunohistochemistry

Image 1. Formalin-fixed, paraffin-embedded section of human colon stained for Bag1. Using Bag1 polyclonal antibody at 1 : 2000. Hematoxylin-eosin counterstain.



Immunohistochemistry

Image 2. Formalin-fixed, paraffin-embedded sections of human colorectal cancer stained for Bag1. Using Bag1 polyclonal antibody at 1 : 2000. Hematoxylin-eosin counterstain. Samples from two patients (A and B) are shown. A1 and B1 are higher magnifications from A and B, respectively.