

Datasheet for ABIN537490
anti-SCPEP1 antibody (AA 28-43)[Go to Product page](#)

1 Image

Overview

Quantity:	200 µL
Target:	SCPEP1
Binding Specificity:	AA 28-43
Reactivity:	Human, Mouse, Rat
Host:	Rabbit
Clonality:	Polyclonal
Conjugate:	This SCPEP1 antibody is un-conjugated
Application:	Western Blotting (WB)

Product Details

Purpose:	Rabbit polyclonal antibody raised against synthetic peptide of SCPEP1.
Immunogen:	A synthetic peptide corresponding to amino acids 28-43 of human SCPEP1.
Cross-Reactivity:	Human, Mouse, Rat

Target Details

Target:	SCPEP1
Alternative Name:	SCPEP1 (SCPEP1 Products)
Gene ID:	59342

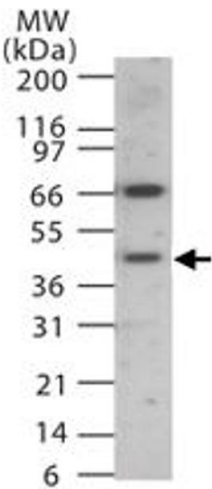
Application Details

Application Notes:	The optimal working dilution should be determined by the end user.
Restrictions:	For Research Use only

Handling

Format:	Liquid
Buffer:	In PBS (0.1 mg/mL BSA, 0.02 % sodium azide)
Preservative:	Sodium azide
Precaution of Use:	This product contains Sodium azide: a POISONOUS AND HAZARDOUS SUBSTANCE which should be handled by trained staff only.
Storage:	4 °C, -20 °C
Storage Comment:	Store at 4°C. For long term storage store at -20°C. Aliquot to avoid repeated freezing and thawing.

Images



Western Blotting

Image 1. Western blot analysis of human SCPEP1 in 15 ugs of human heart lysate. Using SCPEP1 polyclonal antibody at 1 : 1000 dilution.