

Datasheet for ABIN537507  
**anti-TLX1 antibody (AA 300-330)**[Go to Product page](#)

## 1 Image

## Overview

Quantity:	100 µg
Target:	TLX1
Binding Specificity:	AA 300-330
Reactivity:	Mouse, Human, Rat
Host:	Rabbit
Clonality:	Polyclonal
Conjugate:	This TLX1 antibody is un-conjugated
Application:	Western Blotting (WB)

## Product Details

Purpose:	Rabbit polyclonal antibody raised against synthetic peptide of TLX1.
Immunogen:	A synthetic peptide corresponding to amino acids 300-330 of human TLX1.
Cross-Reactivity:	Human, Mouse, Rat

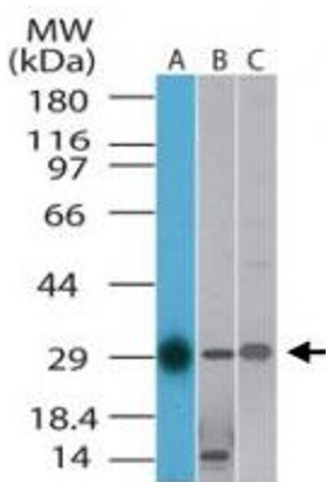
## Target Details

Target:	TLX1
Alternative Name:	TLX1 ( <a href="#">TLX1 Products</a> )
Gene ID:	3195

## Application Details

Application Notes:	The optimal working dilution should be determined by the end user.
Restrictions:	For Research Use only
Handling	
Format:	Liquid
Buffer:	In PBS (0.2 % gelatin, 0.05 % sodium azide)
Preservative:	Sodium azide
Precaution of Use:	This product contains Sodium azide: a POISONOUS AND HAZARDOUS SUBSTANCE which should be handled by trained staff only.
Storage:	4 °C,-20 °C
Storage Comment:	Store at 4°C. For long term storage store at -20°C. Aliquot to avoid repeated freezing and thawing.

## Images



**Western Blotting**

**Image 1.** Western blot analysis of TLX1 in A) human, B) mouse and C) rat liver lysate. Using TLX1 polyclonal antibody at 1 ug/mL .