

Datasheet for ABIN537786

anti-RGS5 antibody**1** Image[Go to Product page](#)

Overview

Quantity:	100 µL
Target:	RGS5
Reactivity:	Dog
Host:	Rabbit
Clonality:	Polyclonal
Conjugate:	This RGS5 antibody is un-conjugated
Application:	Western Blotting (WB)

Product Details

Purpose:	Rabbit polyclonal antibody raised against synthetic peptide of RGS5.
Immunogen:	A synthetic peptide (conjugated with KLH) corresponding to amino acids 169-181 of human RGS5.
Sequence:	RFVRSEFYQE LIK
Cross-Reactivity:	Human, Monkey, Mouse, Pig, Rat

Target Details

Target:	RGS5
Alternative Name:	RGS5 (RGS5 Products)
Pathways:	Myometrial Relaxation and Contraction , Regulation of G-Protein Coupled Receptor Protein Signaling

Application Details

Application Notes: The optimal working dilution should be determined by the end user.

Restrictions: For Research Use only

Handling

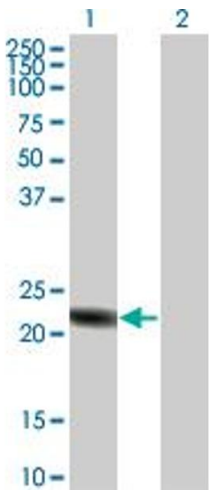
Format: Liquid

Buffer: In serum (50 % glycerol, 0.025 % sodium azide)

Storage: -20 °C

Storage Comment: Store at -20°C.
Aliquot to avoid repeated freezing and thawing.

Images



Western Blotting

Image 1. Western Blot analysis of RGS5 expression in transfected 293T cell line by RGS5 polyclonal antibody.