



[Go to Product page](#)

Datasheet for ABIN537876
anti-ATG10 antibody (C-Term)

1 Image

Overview

Quantity:	100 µL
Target:	ATG10
Binding Specificity:	C-Term
Reactivity:	Human
Host:	Rabbit
Clonality:	Polyclonal
Conjugate:	This ATG10 antibody is un-conjugated
Application:	Immunofluorescence (IF), Immunohistochemistry (Frozen Sections) (IHC (fro))

Product Details

Purpose:	Rabbit polyclonal antibody raised against synthetic peptide of ATG10.
Immunogen:	A synthetic peptide (conjugated with Blue Carrier Protein) corresponding to C-terminus of human ATG10.
Cross-Reactivity:	Human

Target Details

Target:	ATG10
Alternative Name:	APG10L / ATG10 (ATG10 Products)
Gene ID:	83734
Pathways:	ER-Nucleus Signaling, Autophagy

Application Details

Application Notes: Immunohistochemistry (1:100-1:1000)
Immunofluorescence (1:100-1:1000)
The optimal working dilution should be determined by the end user.

Restrictions: For Research Use only

Handling

Format: Lyophilized

Buffer: Lyophilized from PBS

Storage: 4 °C,-20 °C

Storage Comment: Store at 4°C on dry atmosphere.
After reconstitution with deionized water, store at -20°C or lower.
Aliquot to avoid repeated freezing and thawing.

Images

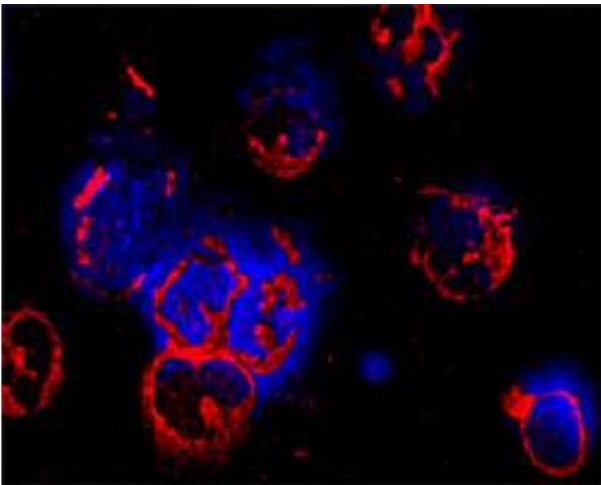


Image 1. Confocal microscopy on immunofluorescently detected ATG10 in cytospin-isolated human white blood cells using rabbit ATG10 polyclonal antibody at a dilution of 1 : 100, incubated for 1 hr at room temperature. The cells stained for ATG10 appear in red. The cells were then counter stained with Hoechst Dye (blue colour) . Here, the merged picture is presented. More information on the staining : Fixation : In acetone for 90 seconds. Antibody dilutions : Primary antibody was diluted 1 : 100 and incubated for 1 hr, washed then 3x, and the secondary (Goat anti Rb 1 : 100 alexa 546 conjugate) was incubated for 30 minutes. Magnification 80X.