

Datasheet for ABIN537925
anti-TRAF7 antibody (AA 334-356)[Go to Product page](#)

1 Image

Overview

Quantity:	100 µg
Target:	TRAF7
Binding Specificity:	AA 334-356
Reactivity:	Human, Mouse, Rat
Host:	Rabbit
Clonality:	Polyclonal
Conjugate:	This TRAF7 antibody is un-conjugated
Application:	ELISA, Western Blotting (WB)

Product Details

Purpose:	Rabbit polyclonal antibody raised against synthetic peptide of TRAF7.
Immunogen:	A synthetic peptide (conjugated with KLH) corresponding to amino acids 334-356 of human TRAF7.
Cross-Reactivity:	Human, Mouse, Rat

Target Details

Target:	TRAF7
Alternative Name:	TRAF7 / RNF119 (TRAF7 Products)
Gene ID:	84231

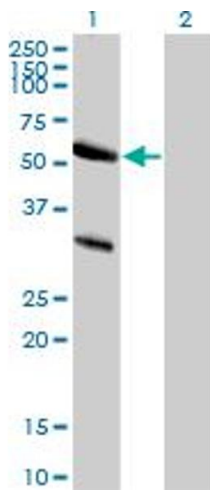
Application Details

Application Notes:	ELISA (0.1-1.0 µg/mL) The optimal dilution should be determined by the end user.
Restrictions:	For Research Use only

Handling

Format:	Liquid
Buffer:	In PBS (0.2 % gelatin, 0.05 % sodium azide)
Preservative:	Sodium azide
Precaution of Use:	This product contains Sodium azide: a POISONOUS AND HAZARDOUS SUBSTANCE which should be handled by trained staff only.
Storage:	4 °C,-20 °C
Storage Comment:	Store at 4°C. For long term storage store at -20°C. Aliquot to avoid repeated freezing and thawing.

Images



Western Blotting

Image 1. Western Blot analysis of TRAF7 expression in transfected 293T cell line by TRAF7 polyclonal antibody.