



[Go to Product page](#)

Datasheet for ABIN538238

## anti-Angiopoietin 1 antibody (N-Term)

### 2 Images

#### Overview

Quantity:	200 µL
Target:	Angiopoietin 1 (ANGPT1)
Binding Specificity:	N-Term
Reactivity:	Human, Mouse
Host:	Rabbit
Clonality:	Polyclonal
Conjugate:	This Angiopoietin 1 antibody is un-conjugated
Application:	Western Blotting (WB), ELISA, Immunoprecipitation (IP), Immunohistochemistry (Paraffin-embedded Sections) (IHC (p))

#### Product Details

Purpose:	Rabbit polyclonal antibody raised against synthetic peptide of Angpt1.
Immunogen:	A synthetic peptide (conjugated with KLH) corresponding to N-terminus of mouse Angpt1.
Cross-Reactivity:	Human, Mouse
Characteristics:	Antibody Reactive Against Synthetic Peptide.

#### Target Details

Target:	Angiopoietin 1 (ANGPT1)
Alternative Name:	Angpt1 ( <a href="#">ANGPT1 Products</a> )
Gene ID:	11600

## Target Details

---

Pathways: [RTK Signaling, Glycosaminoglycan Metabolic Process](#)

## Application Details

---

Application Notes: Western Blot (1:500-1:2000)  
Immunohistochemistry (1:200-1:800)  
The optimal working dilution should be determined by the end user.

Restrictions: For Research Use only

## Handling

---

Format: Liquid

Buffer: In 20 mM KH<sub>2</sub>PO<sub>4</sub>, 150 mM NaCl, pH 7.2 (0.01 % sodium azide)

Preservative: Sodium azide

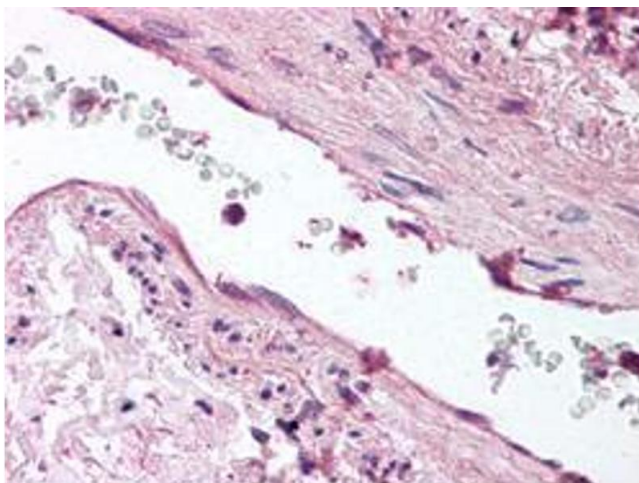
Precaution of Use: This product contains Sodium azide: a POISONOUS AND HAZARDOUS SUBSTANCE which should be handled by trained staff only.

Storage: 4 °C, -20 °C

Storage Comment: Store at 4°C. For long term storage store at -20°C.  
Aliquot to avoid repeated freezing and thawing.

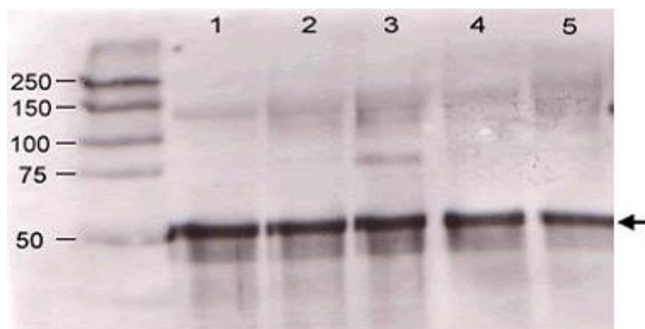
## Images

---



### Immunohistochemistry

**Image 1.** Immunohistochemical staining with Angpt1 polyclonal antibody was diluted 1 : 500 to detect Angpt1 in human lung tissue. Tissue was formalin fixed and paraffin embedded. No pre-treatment of sample was required. The image shows the localization of antibody as the precipitated red signal, with a hematoxylin purple nuclear counter stain.



### Immunoprecipitation

**Image 2.** Immunoblotting of Angpt1 polyclonal antibody was used at a 1:500 dilution to detect mouse Angpt1 by western blot against supernatants of mouse angiopoietin-expressing endothelial cells. Lane 1 - wt endothelial cells. Lane 2 - mouse Angpt1 (clone 1-8) expressing cells. Lane 3 - mouse Angpt1 (clone 1-15) expressing cells. Lane 4 - mouse Angpt2 (clone 2-9) expressing cells. Approximately 20 ug of each lysate was used for 10% SDS-PAGE. Immunoprecipitation preceded the reaction with primary antibody at room temperature for 1 h. After subsequent washing, a 1:5,000 dilution of HRP conjugated Gt-a-Rabbit IgG preceded color development.