



Datasheet for ABIN538555
anti-PPP1CA antibody (AA 317-330)



[Go to Product page](#)

1 Image

Overview

Quantity:	100 µg
Target:	PPP1CA
Binding Specificity:	AA 317-330
Reactivity:	Cow
Host:	Rabbit
Clonality:	Polyclonal
Conjugate:	This PPP1CA antibody is un-conjugated
Application:	Western Blotting (WB), Immunoprecipitation (IP)

Product Details

Purpose:	Rabbit polyclonal antibody raised against synthetic peptide of PPP1CA.
Immunogen:	A synthetic peptide (conjugated with KLH) corresponding to amino acids 317-330 of PPP1CA.
Sequence:	RPITPPRNSA KAKK
Cross-Reactivity:	Cow, Human, Mouse, Rat
Characteristics:	Antibody Reactive Against Synthetic Peptide.

Target Details

Target:	PPP1CA
Alternative Name:	PPP1CA (PPP1CA Products)
Gene ID:	5499

Target Details

Pathways: [M Phase](#), [Cellular Glucan Metabolic Process](#), [Regulation of Carbohydrate Metabolic Process](#), [Lipid Metabolism](#)

Application Details

Application Notes: Western blot (1:500 to 1:1000)
The optimal working dilution should be determined by the end user.

Restrictions: For Research Use only

Handling

Format: Liquid

Buffer: In PBS (0.08 % sodium azide)

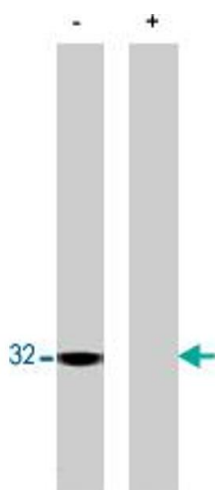
Preservative: Sodium azide

Precaution of Use: This product contains Sodium azide: a POISONOUS AND HAZARDOUS SUBSTANCE which should be handled by trained staff only.

Storage: -20 °C

Storage Comment: Store at -20°C.
Aliquot to avoid repeated freezing and thawing.

Images



Western Blotting

Image 1. Western blot of PPP1CA polyclonal antibody from total rat brain homogenate. (+) indicates staining done in the presence of specific blocking peptide or (-) peptide control.