

Datasheet for ABIN538564
anti-PPP2R2A antibody (AA 14-27)[Go to Product page](#)

1 Image

Overview

Quantity:	100 µg
Target:	PPP2R2A
Binding Specificity:	AA 14-27
Reactivity:	Cow
Host:	Sheep
Clonality:	Polyclonal
Conjugate:	This PPP2R2A antibody is un-conjugated
Application:	Western Blotting (WB), Immunocytochemistry (ICC)

Product Details

Purpose:	Sheep polyclonal antibody raised against synthetic peptide of PPP2R2A.
Immunogen:	A synthetic peptide (conjugated with KLH) corresponding to amino acids 14-27 of PPP2R2A.
Sequence:	FSQVLGAVDD DVAE
Cross-Reactivity:	Cow, Human, Mouse, Rat
Characteristics:	Antibody Reactive Against Synthetic Peptide.

Target Details

Target:	PPP2R2A
Alternative Name:	PPP2R2A (PPP2R2A Products)
Gene ID:	5520

Target Details

Pathways: [Mitotic G1-G1/S Phases](#), [Hepatitis C](#)

Application Details

Application Notes: Western blot (5 to 10 µg/mL)
Immunocytochemistry (2 to 10 µg/mL)
The optimal working dilution should be determined by the end user.

Restrictions: For Research Use only

Handling

Format: Liquid

Buffer: In PBS (0.08 % sodium azide)

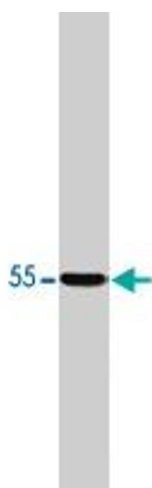
Preservative: Sodium azide

Precaution of Use: This product contains Sodium azide: a POISONOUS AND HAZARDOUS SUBSTANCE which should be handled by trained staff only.

Storage: -20 °C

Storage Comment: Store at -20°C.
Aliquot to avoid repeated freezing and thawing.

Images



Western Blotting

Image 1. PPP2R2A polyclonal antibody in western blot of total rat brain homogenate.