

Datasheet for ABIN539570
anti-S100A/B antibody[Go to Product page](#)

3 Images

2 Publications

Overview

Quantity:	500 µg
Target:	S100A/B
Reactivity:	Cow
Host:	Rabbit
Clonality:	Polyclonal
Conjugate:	This S100A/B antibody is un-conjugated
Application:	Western Blotting (WB), ELISA, Immunohistochemistry (Paraffin-embedded Sections) (IHC (p))

Product Details

Purpose:	Rabbit polyclonal antibody raised against full length recombinant S100A1/S100B.
Immunogen:	Recombinant protein corresponding to full length bovine S100A1/S100B.
Specificity:	A 98 % homology is noted for S100 alpha chain from primate sources. Mouse, rat and dog show 94 % homology with the bovine S100 alpha sequence. Expect cross reactivity with S100 from most mammalian sources. Homologies for the S100 beta chain are similar.
Cross-Reactivity:	Cow, Dog, Mouse, Rat
Characteristics:	Antibody Reactive Against Recombinant Protein.

Target Details

Target:	S100A/B
Alternative Name:	S100A1 (S100A/B) (S100A/B Products)

Target Details

Gene ID: 528735, 525716

Pathways: [S100 Proteins](#)

Application Details

Application Notes: ELISA (1:5000-1:25000)
Western Blot (1:500-1:3000)
Immunohistochemistry (1:200-1:2000)
The optimal working dilution should be determined by the end user.

Restrictions: For Research Use only

Handling

Format: Lyophilized

Buffer: Lyophilized from 20 mM KH₂PO₄, 150 mM NaCl, pH 7.2 (0.01 % sodium azide)

Preservative: Sodium azide

Precaution of Use: This product contains Sodium azide: a POISONOUS AND HAZARDOUS SUBSTANCE which should be handled by trained staff only.

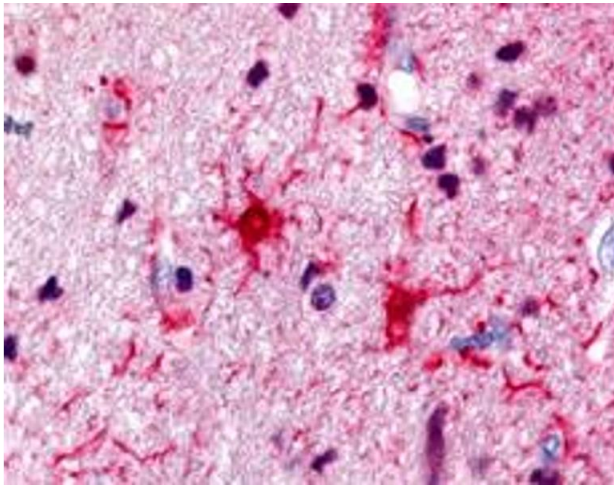
Storage: 4 °C, -20 °C

Storage Comment: Store at 4°C. For long term storage store at -20°C.
Aliquot after reconstitution to avoid repeated freezing and thawing.

Publications

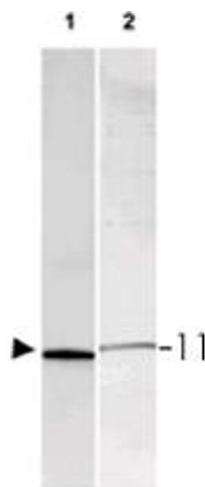
Product cited in: Charron, Doudnikoff, Canron, Li, Véga, Marais, Baufreton, Vital, Oliet, Bezard: "Astrocytosis in parkinsonism: considering tripartite striatal synapses in physiopathology?" in: **Frontiers in aging neuroscience**, Vol. 6, pp. 258, (2014) ([PubMed](#)).

Charron, Doudnikoff, Laux, Berthet, Porras, Canron, Barroso-Chinea, Li, Qin, Nosten-Bertrand, Giros, Delalande, Van Dorsselaer, Vital, Goumon, Bezard: "Endogenous morphine-like compound immunoreactivity increases in parkinsonism." in: **Brain : a journal of neurology**, Vol. 134, Issue Pt 8, pp. 2321-38, (2011) ([PubMed](#)).



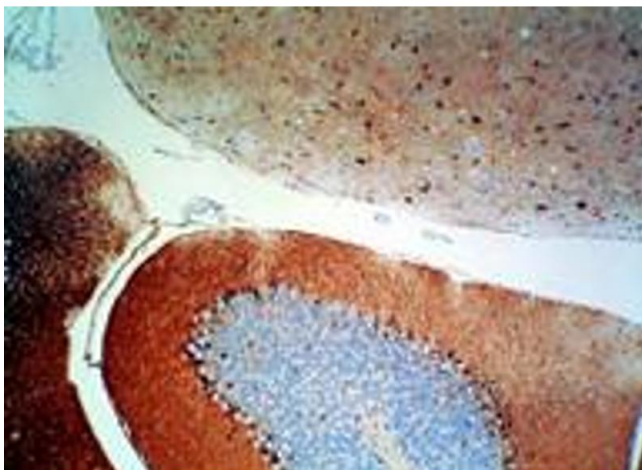
Immunohistochemistry

Image 1. Immunohistochemistry of S100A1/S100B polyclonal antibody was used at a 1:500 dilution to detect S100A1/S100B by immunohistochemistry in human brain astrocyte tumor tissue. Tissue was formalin-fixed and paraffin embedded. Personal Communication, Alan Yen, Life Span Biosciences, Seattle, WA.



Western Blotting

Image 2. Western blot using S100A1/S100B polyclonal antibody shows detection of a band ~11 kDa corresponding to bovine S100A1/S100B monomer (100 ng loaded, arrowhead lane 1). The antibody also detects S100A1/S100B from rat brain lysate (Lane 2). Approximately 35 ug of a rat brain whole cell lysate was separated by 16% SDS-PAGE and transferred onto nitrocellulose.



Immunohistochemistry

Image 3. Immunohistochemistry of S100A1/S100B polyclonal antibody was used at a 1:500 dilution to detect S100A1/S100B. Dark nuclear staining is observed within basket cells located near the Purkinje cells in the mouse cerebellum. Personal Communication, Teri Johnson, Stowers Institute, Kansas City, MO.