

Datasheet for ABIN539880
anti-SUPT3H/SPT3 antibody (AA 1-200)[Go to Product page](#)

1 Image

Overview

Quantity:	100 µL
Target:	SUPT3H/SPT3 (SUPT3H)
Binding Specificity:	AA 1-200
Reactivity:	<i>Saccharomyces cerevisiae</i>
Host:	Rabbit
Clonality:	Polyclonal
Conjugate:	This SUPT3H/SPT3 antibody is un-conjugated
Application:	Western Blotting (WB), ELISA

Product Details

Purpose:	Rabbit polyclonal antibody raised against partial recombinant <i>Saccharomyces cerevisiae</i> SPT3.
Immunogen:	Recombinant protein corresponding to amino acids 1-200 <i>Saccharomyces cerevisiae</i> SPT3.

Target Details

Target:	SUPT3H/SPT3 (SUPT3H)
Alternative Name:	SPT3 (SUPT3H Products)
Gene ID:	852001

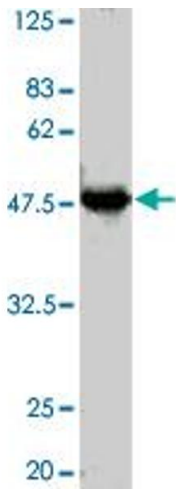
Application Details

Application Notes:	The optimal working dilution should be determined by the end user.
Restrictions:	For Research Use only

Handling

Format:	Liquid
Buffer:	In buffer containing 0.09 % sodium azide
Preservative:	Sodium azide
Precaution of Use:	This product contains Sodium azide: a POISONOUS AND HAZARDOUS SUBSTANCE which should be handled by trained staff only.
Storage:	4 °C
Storage Comment:	Store at 4°C.

Images



Western Blotting

Image 1. Detection of SPT3 by Western blotting using the SPT3 polyclonal antibody . Extract of budding yeast was using as antigen. The antiserum was diluted 5000 fold before use.