

Datasheet for ABIN539902

**anti-GTF2B antibody**[Go to Product page](#)**1** Image

## Overview

Quantity:	100 µL
Target:	GTF2B
Reactivity:	<i>Saccharomyces cerevisiae</i>
Host:	Rabbit
Clonality:	Polyclonal
Conjugate:	This GTF2B antibody is un-conjugated
Application:	Western Blotting (WB), ELISA

## Product Details

Purpose:	Rabbit polyclonal antibody raised against full length recombinant <i>Saccharomyces cerevisiae</i> SUA7.
Immunogen:	Recombinant protein corresponding to full length <i>Saccharomyces cerevisiae</i> SUA7.

## Target Details

Target:	GTF2B
Alternative Name:	SUA7 / TFIIB ( <a href="#">GTF2B Products</a> )
Gene ID:	856201

## Application Details

Application Notes:	The optimal working dilution should be determined by the end user.
--------------------	--

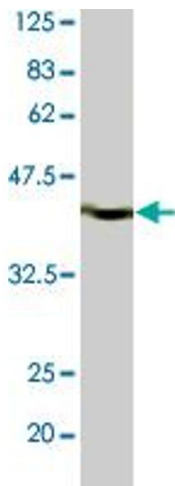
## Application Details

Restrictions: For Research Use only

## Handling

Format:	Liquid
Buffer:	In buffer containing 0.09 % sodium azide
Preservative:	Sodium azide
Precaution of Use:	This product contains Sodium azide: a POISONOUS AND HAZARDOUS SUBSTANCE which should be handled by trained staff only.
Storage:	4 °C
Storage Comment:	Store at 4°C.

## Images



### Western Blotting

**Image 1.** Detection of SUA7 by Western blotting using the SUA7 polyclonal antibody . Extract of budding yeast was using as antigen. The antiserum was diluted 5000 fold before use.