

Datasheet for ABIN540277  
**anti-SYCP3 antibody (C-Term)**[Go to Product page](#)

## 1 Image

## Overview

Quantity:	100 µL
Target:	SYCP3
Binding Specificity:	C-Term
Reactivity:	Human, Mouse, Rat, Pig
Host:	Rabbit
Clonality:	Polyclonal
Conjugate:	This SYCP3 antibody is un-conjugated
Application:	Western Blotting (WB), Immunohistochemistry (Paraffin-embedded Sections) (IHC (p)), Immunofluorescence (IF)

## Product Details

Purpose:	Rabbit polyclonal antibody raised against synthetic peptide of SYCP3.
Immunogen:	A synthetic peptide corresponding to C-terminus of human SYCP3.
Specificity:	This antibody is specific to human SCP3.
Cross-Reactivity:	Human, Mouse, Pig, Rat
Characteristics:	Antibody Reactive Against Synthetic Peptide.

## Target Details

Target:	SYCP3
Alternative Name:	SYCP3 / SCP3 ( <a href="#">SYCP3 Products</a> )

## Target Details

Gene ID: 50511

## Application Details

Application Notes: Western Blot (0.5 µg/mL)  
The optimal working dilution should be determined by the end user.

Restrictions: For Research Use only

## Handling

Format: Liquid

Buffer: In PBS (0.09 % sodium azide)

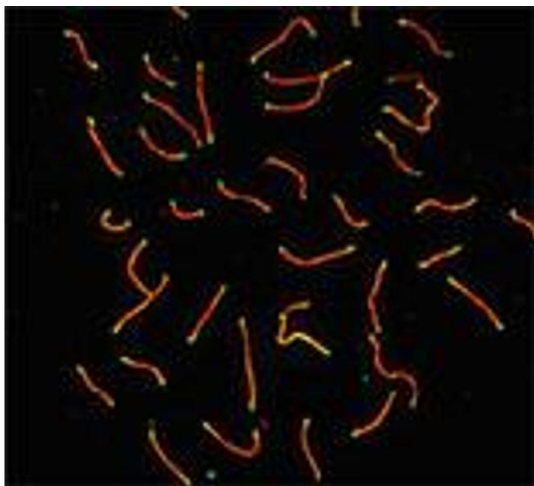
Preservative: Sodium azide

Precaution of Use: This product contains Sodium azide: a POISONOUS AND HAZARDOUS SUBSTANCE which should be handled by trained staff only.

Storage: 4 °C

Storage Comment: Store at 4°C. Do not freeze.

## Images



### Immunofluorescence

**Image 1.** Immunofluorescence staining of SYCP3 on mouse pachytene preparation (red) with SYCP3 polyclonal antibody . CDK2 staining, near telomeres, is also present (green).