

Datasheet for ABIN540278

anti-SYCP1 antibody (C-Term)**1** Image**1** Publication[Go to Product page](#)

Overview

Quantity:	100 µL
Target:	SYCP1
Binding Specificity:	C-Term
Reactivity:	Human, Mouse, Rat
Host:	Rabbit
Clonality:	Polyclonal
Conjugate:	This SYCP1 antibody is un-conjugated
Application:	Immunofluorescence (IF), Immunohistochemistry (Paraffin-embedded Sections) (IHC (p))

Product Details

Purpose:	Rabbit polyclonal antibody raised against synthetic peptide of SYCP1.
Immunogen:	A synthetic peptide corresponding to C-terminus of human SYCP1.
Specificity:	This antibody is specific to human SCP1.
Cross-Reactivity:	Human, Mouse, Rat

Target Details

Target:	SYCP1
Alternative Name:	SYCP1 / SCP1 (SYCP1 Products)
Gene ID:	6847

Application Details

Application Notes:	Immunofluorescence (1:300-1:750) The optimal working dilution should be determined by the end user.
Restrictions:	For Research Use only

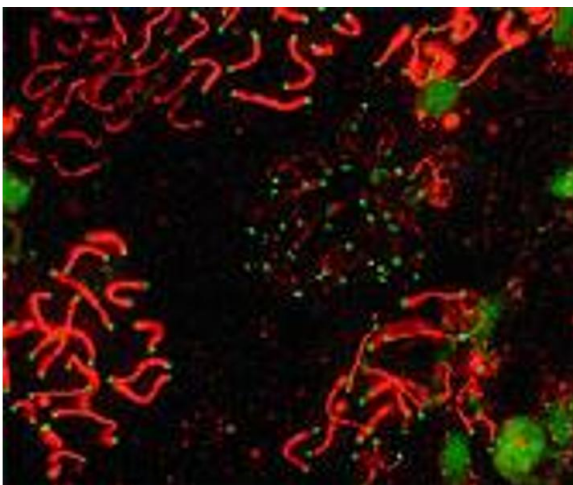
Handling

Format:	Liquid
Buffer:	In Tris-citrate/phosphate buffer, pH 7.0-8.0 (0.09 % sodium azide)
Preservative:	Sodium azide
Precaution of Use:	This product contains Sodium azide: a POISONOUS AND HAZARDOUS SUBSTANCE which should be handled by trained staff only.
Storage:	4 °C
Storage Comment:	Store at 4°C. Do not freeze.

Publications

Product cited in:	Dann, Alvarado, Hammer, Garbers: "Heritable and stable gene knockdown in rats." in: Proceedings of the National Academy of Sciences of the United States of America , Vol. 103, Issue 30, pp. 11246-51, (2006) (PubMed).
-------------------	---

Images



Immunofluorescence

Image 1. Immunofluorescence staining of SYCP1 on mouse pachytene preparation (red) with SYCP1 polyclonal antibody . CDK2 staining, near telomeres, is also present (green).