



[Go to Product page](#)

Datasheet for ABIN540282

## anti-SSTR1 antibody

### 1 Image

#### Overview

Quantity:	100 µL
Target:	SSTR1
Reactivity:	Please inquire
Host:	Rabbit
Clonality:	Polyclonal
Conjugate:	This SSTR1 antibody is un-conjugated
Application:	Western Blotting (WB), Immunoprecipitation (IP), Immunocytochemistry (ICC)

#### Product Details

Purpose:	Rabbit polyclonal antibody raised against synthetic peptide of Sstr1.
Immunogen:	A synthetic peptide corresponding to C-terminus of rat Sstr1.

#### Target Details

Target:	SSTR1
Alternative Name:	SSTR1 ( <a href="#">SSTR1 Products</a> )

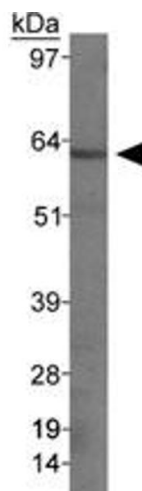
#### Application Details

Application Notes:	Western Blot (1:1000-1:5000) The optimal working dilution should be determined by the end user.
Restrictions:	For Research Use only

## Handling

Format:	Liquid
Buffer:	In antiserum (0.05 % sodium azide)
Storage:	-20 °C,-80 °C
Storage Comment:	Store at -20°C or -80°C. Aliquot to avoid repeated freezing and thawing.

## Images



### Western Blotting

**Image 1.** Western blot analysis of Sstr1 in rat pancreas with Sstr1 polyclonal antibody .